



# 2023 In Review: Where We've Been & Where We're Going

Nursing Home Project Overview



**QIN-QIO**  
Quality Innovation Network -  
Quality Improvement Organizations  
CENTERS FOR MEDICARE & MEDICAID SERVICES  
QUALITY IMPROVEMENT & INNOVATION GROUP

# Nursing Home Initiatives

- **Opioid Misuse and Utilization**
  - Decrease opioid adverse drug events, including deaths, for high risk residents
- **Patient Safety**
  - Decrease hospitalizations due to adverse drug events
  - Decrease in hospitalizations related to facility acquired infections in nursing homes (C-diff, COVID-19, sepsis, UTIs, and pneumonia)
- **Care Coordination**
  - Decrease in preventable ED visits and 30 day readmissions to hospitals



# Nursing Home Initiatives, cont.

- Immunizations
  - Increase influenza, pneumococcal and COVID-19 vaccine rates
- Training
  - Increase percentage of nursing homes that have completed Infection Control and Prevention training approved by the Centers for Medicare & Medicaid Services (CMS)



# Opioid ADEs 2023 - 2024

- Webinars
  - Ensuring Medication for Opioid use Disorder (MOUD) Treatment through the Care Continuum Webinar Series
    - <https://bit.ly/MOUDthroughCareContinuumSeries>
- Opioid Workgroups
  - Next Workgroup starts Jan. 15
    - <https://us06web.zoom.us/meeting/register/tZAqduuspzwpHNKcRAVOtOkfr4V1YTZGS2vN#/registration>
- Resources
  - Opioid Risk Assessment Tool
    - <https://www.qualityinsights.org/qin/resources#opioid-risk-assessment-tool-fillable>
  - Opioid Reduction Review
    - <https://www.qualityinsights.org/qin/resources#opioid-reduction-review>



# Patient Safety 2023 - 2024

- **Webinars**
  - Weekly webinars: Sepsis, MDROs, ADE risk, UTI prevention and treatment, AP med reduction, Anticoagulants (upcoming)
- **Workgroups**
  - Readmissions workgroup 2023, Upcoming workgroup 2024  
On demand platform for 2024 with free CEs
- **Resources**
  - How to Manage my Blood Thinner
  - Antipsychotic Medication Tip Sheet



# Immunization Measures

- Increase Influenza vaccination rates
- Increase Pneumococcal vaccination rates
- Increase COVID resident vaccination rates
- Increase COVID staff vaccination rates



# Immunization Campaign



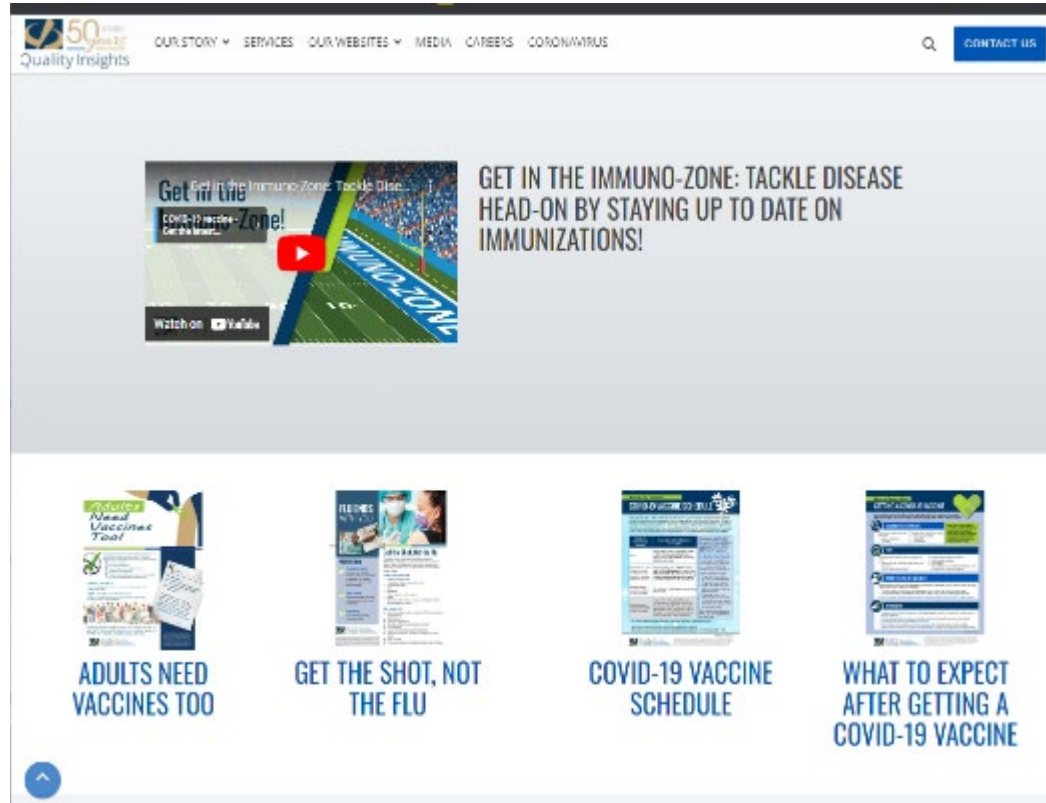
<https://youtu.be/RDOWOXjYvTI?si=lzHQAxe3zcF78idc>



# Immunization Campaign

Vaccination landing page

<https://www.qualityinsights.org/qin-qio-vaccinations>



The screenshot shows the Quality Insights website's immunization landing page. At the top, there is a navigation bar with the Quality Insights logo (50th Anniversary) and links for 'OUR STORY', 'SERVICES', 'OUR WEBSITES', 'MEDIA', 'CAREERS', and 'CORONAVIRUS'. A search icon and a 'CONTACT US' button are also present. The main content area features a large video player with a play button and the text 'Get in the Immuno-Zone! Tackle Disease Head-On by Staying Up to Date on Immunizations!'. Below the video player, there are four featured articles, each with a thumbnail image and a title: 'ADULTS NEED VACCINES TOO', 'GET THE SHOT, NOT THE FLU', 'COVID-19 VACCINE SCHEDULE', and 'WHAT TO EXPECT AFTER GETTING A COVID-19 VACCINE'. A blue arrow icon is located in the bottom left corner of the page.





# Resources

- COVID-19 Vaccine Schedule
  - <https://www.qualityinsights.org/qin/resources# covid19-vaccine-schedule-for-patients--residents>

**Are You Up To Date?**

## COVID-19 VACCINE SCHEDULE

The updated 2023-2024 COVID-19 vaccines are now available. The 2023-2024 updated COVID-19 vaccines are formulated to more closely target the currently circulating COVID-19 variants. These updated vaccines can restore protection against severe COVID-19 symptoms.

The following vaccine schedule is recommended by the Centers for Disease Control and Prevention (CDC).<sup>1</sup> Those who are severely immunocompromised may need additional doses<sup>2</sup> (see sidebar).

COVID-19 Vaccination History	Dose Needed to Become Up To Date
None	People ages 5 years and older* need 1 dose of the updated Moderna or Pfizer 2023-2024 COVID-19 vaccine to become up to date.
Received 1 or more doses of a Pfizer or Moderna monovalent or bivalent COVID-19 vaccine	People ages 5 years and older* need 1 dose of the updated Moderna or Pfizer 2023-2024 COVID-19 vaccine to become up to date. It should be administered at least 2 months after the most recent dose.
Received at least 1 dose of the 2023-24 COVID-19 vaccine	Up to date (no additional doses needed at this time).
Received at least 1 dose of the Novavax COVID-19 vaccine	People who received the Novavax vaccine are up to date when they get the Novavax COVID-19 vaccine doses approved for their age group or when they get 1 dose of the updated Moderna or Pfizer 2023-2024 COVID-19 vaccine.

**Are you eligible for a second dose of the updated 2023-2024 COVID-19 vaccine?**

People who are moderately or severely immunocompromised may need additional COVID-19 vaccine doses due to a medical condition or treatment for a medical condition. Examples include:



- People who have cancer and are on chemotherapy
- People who have had an organ transplant and are taking medication to keep their transplant
- People who must use certain types of medicines for a long time that weaken their immune system (such as corticosteroids)

Check with your doctor to see if you are eligible for a second dose.

\* For information on ages 6 months to under 5 years, visit [vaccines.gov](https://www.vaccines.gov).

1 <https://www.cdc.gov/coronavirus/2019-ncov/vaccines/stay-up-to-date.html>  
2 <https://www.cdc.gov/coronavirus/2019-ncov/need-extra-precautions/people-with-medical-conditions.html>

UPDATED: OCTOBER 2023

 **Quality Insights**  QIN GEN  
Quality Innovation Network  
Quality Improvement Organization

This material was prepared by Quality Insights, a Quality Innovation Network - Quality Improvement Organization under contract with the Centers for Medicare & Medicaid Services (CMS), an agency of the U.S. Department of Health and Human Services (HHS). Views expressed in this material do not necessarily reflect the official views or policy of CMS or HHS, and any reference to a specific product or entity herein does not constitute endorsement of that product or entity by CMS or HHS. Publication number 125509-QI-GEN-101023-CC



# Resources

- RSV Vaccine Information
  - <https://www.qualityinsights.org/qin/resources#rsv-vaccine>

## What you need to know about RSV vaccines



Respiratory Syncytial Virus (RSV) is a common cause of respiratory illness in older adults. Symptoms of RSV can be severe in older adults. There are now two vaccines approved for people ages 60 and older.

### Who should get the RSV vaccine?

Adults ages 60 and older should talk with their healthcare provider about the RSV vaccine.

Your healthcare provider might recommend the RSV vaccine, especially if you have certain health risks, such as:

- Having a weakened immune system
- Having a chronic medical condition, like heart or lung disease
- Living in a nursing home

If any of those risks applies to you, your chances of experiencing severe RSV disease are higher and getting an RSV vaccine could help prevent serious illness.

### How do I get the RSV vaccine?

The RSV vaccine is a single dose. Check with your doctor's office or local pharmacy for RSV vaccine availability.

*Check with your healthcare provider to see if the RSV vaccine is right for you!*

SOURCE: <https://www.cdc.gov/vaccines/vpd/rsv/public/older-adults.html>

### What are the possible side effects of the RSV vaccine?

The most common side effects are pain, redness, or swelling where the shot is given.

Fatigue, fever, headache, nausea, diarrhea, and muscle or joint pain are also possible after RSV vaccination. These side effects are usually mild.

A rare complication is the development of serious neurologic conditions after RSV vaccination, including Guillain-Barré syndrome (GBS).

If you experience **severe** side effects from RSV vaccination, you should report them to the Vaccine Adverse Event Reporting System (VAERS). Your healthcare provider might file this report, or you can do it yourself through the [VAERS website](#) or calling 1-800-822-7967.



Quality  
Insights

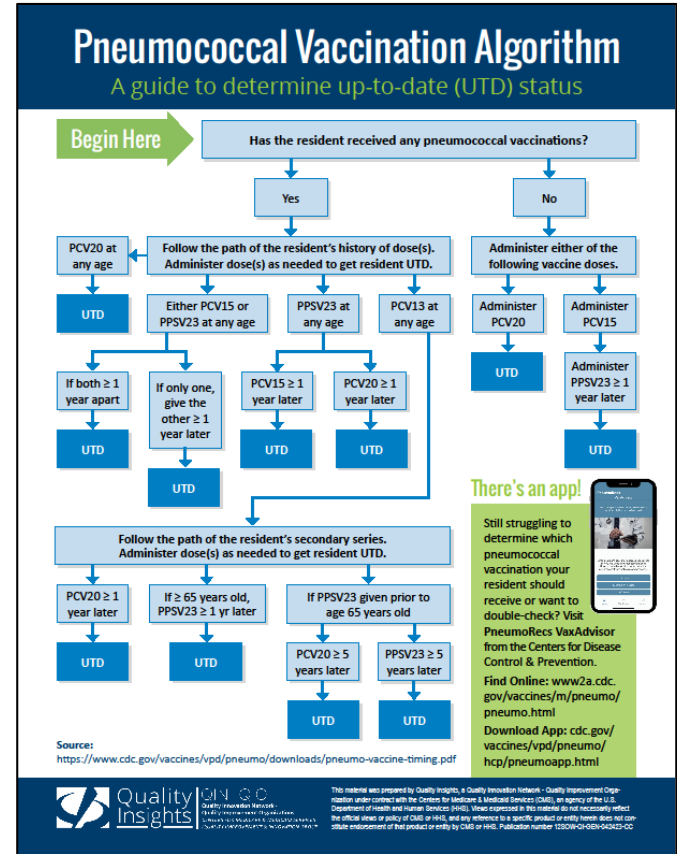
QIN BIO  
Quality Improvement  
Network  
By the members of the  
National Quality Improvement  
Network (NQIN) & the National  
Quality Improvement Network  
(NQIN) members

This material was prepared by Quality Insights, a Quality Improvement Network - Quality Improvement Organization under contract with the Center for Medicare & Medicaid Services (CMS), an agency of the U.S. Department of Health and Human Services (HHS). Views expressed in this material do not necessarily reflect the official views or policy of CMS or HHS, and any reference to a specific product or entity herein does not constitute endorsement of that product or entity by CMS or HHS. Publication number: 12020004-QIN-100223-00



# Resources

- Pneumococcal Vaccination Algorithm
  - <https://www.qualityinsights.org/qin/resources#pneumococcal-vaccination-algorithm>



# Resources

- Adult Immunization Toolkit for Clinicians
  - <https://www.qualityinsights.org/qin/resources#adult-immunizations-toolkit-for-clinicians-updated-november-2023>



**Adult Immunizations  
Toolkit for Clinicians**

 **Quality Insights** Quality Innovation Network • Quality Improvement Centers

This material was prepared by Quality Insights, a Quality Innovation Network - Quality Improvement Organization under contract with the Centers for Medicare & Medicaid Services (CMS), an agency of the U.S. Department of Health and Human Services (HHS). Views expressed in this material do not necessarily reflect the official views or policy of CMS or HHS, and any reference to a specific product or entity herein does not constitute endorsement of that product or entity by CMS or HHS. Publication number 1250W-QI-PQH-110728KS

Revised November 2023



# Resources

## Vaccine Tracking Worksheet

<https://www.qualityinsights.org/qin/resources#vaccine-tracking-worksheet>

**Directions**

TURNING DATA INTO HEALTH  
POWERED BY QAI

This worksheet is designed to log and track pneumococcal and influenza vaccinations in your facility.

- Please note that this worksheet has been formulated to track pneumococcal vaccinations for residents over the age of 65.
- This form is provided by Quality Insights Inc. as a tool. Quality Insights is not responsible or liable for the use of the tool or the use of the acquired data.
- Due Dates are based on the following recommendations from the Centers for Disease Control and Prevention (CDC).

Pneumococcal: The CDC recommends routine administration of pneumococcal conjugate vaccine (PCV15 or PCV20) for all adults 65 years or older who have never received any pneumococcal conjugate vaccine or whose previous vaccination history is unknown.

If PCV15 is used, this should be followed by a dose of PPSV23 1 year later. The minimum interval is 8 weeks and can be considered in adults with an immunocompromising condition, cochlear implant, or cerebrospinal fluid leak.

If PCV20 is used, a dose of PPSV23 is NOT indicated.

Though not currently recommended for adults over 18, some individuals may have had a PCV13 vaccination the past. This spreadsheet has a column to track vaccination and up-to-date status for PCV13 for adults. For individuals over 65 who have had a dose of PCV13, the CDC recommends a dose of PCV20 or PPSV23 after 1 year. However, if PPSV23 is administered, the patient's clinical team should decide whether to administer 1 dose of PCV20 at least 5 years after the last PPSV23 dose.

See "Pneumococcal Vaccination: Summary of Who and When to Vaccinate" for CDC guidance on vaccination options for adults who have previously received a pneumococcal conjugate vaccine.

For customized pneumococcal vaccination recommendations, visit the CDC's PneumoRecs VaxAdvisor here:

PneumoRecs VaxAdvisor

PneumoRecs VaxAdvisor

Directions | Pneumococcal | Influenza



# Vaccine Tracking Worksheet

Pneumococcal Vaccination Tracker																			
Resident Name	Date of Birth	First Initial	Room Number	PCV13 (Pneumovax 1)	PCV15 (Pneumovax 15)	PCV20 (Pneumovax 20)	PCV23 (Pneumovax 23)	Resident Up to date PCV13	Resident Up to date PCV15	Resident Up to date PCV20	Resident Up to date PCV23	Reason for Declining PCV13	Reason for Declining PCV15	Reason for Declining PCV20	Reason for Declining PCV23	Reason for Declining PCV13	Reason for Declining PCV15	Reason for Declining PCV20	
CC-Resident-001																			
CC-Resident-002																			
CC-Resident-003																			
CC-Resident-004																			
CC-Resident-005																			
CC-Resident-006																			
CC-Resident-007																			
CC-Resident-008																			
CC-Resident-009																			
CC-Resident-010																			
CC-Resident-011																			
CC-Resident-012																			
CC-Resident-013																			
CC-Resident-014																			
CC-Resident-015																			
CC-Resident-016																			
CC-Resident-017																			
CC-Resident-018																			
CC-Resident-019																			
CC-Resident-020																			
CC-Resident-021																			
CC-Resident-022																			
CC-Resident-023																			
CC-Resident-024																			
CC-Resident-025																			
CC-Resident-026																			
CC-Resident-027																			
CC-Resident-028																			
CC-Resident-029																			
CC-Resident-030																			
CC-Resident-031																			
CC-Resident-032																			
CC-Resident-033																			
CC-Resident-034																			
CC-Resident-035																			
CC-Resident-036																			
CC-Resident-037																			
CC-Resident-038																			
CC-Resident-039																			
CC-Resident-040																			

<https://www.qualityinsights.org/qin/resources#vaccine-tracking-worksheet>



# Vaccine Tracking Worksheet

Please Enter Flu Season Begin Date:										
<input type="checkbox"/> Not up to date based on current Guidelines			Influenza Vaccination Tracker							
<input type="checkbox"/> Up to date based on current Guidelines										
<input type="checkbox"/> Declined										
Resident Name	Date of Birth	Floor/Unit	Room Num	Vaccination Date (MM/DD/YYYY)	Resident Up to date	Administration Location	Declined?	Reason for Declining	Notes	

<https://www.qualityinsights.org/qin/resources#vaccine-tracking-worksheet>



# Coming in 2024

- Updated Vaccine Tracker
- Staff Vaccination Toolkit
- New resources to support vaccination efforts





# Training

- Project Firstline
  - COVID-19 Infection Training:  
<https://www.qualityinsights.org/qin/resources#project-firstline-covid19-infection-training>
  - Infection Control Training:  
<https://www.qualityinsights.org/qin/resources#project-firstline-infection-control-training>
- CMS Targeted COVID-19 Training Guides:
  - <https://www.qualityinsights.org/qin/resources#scenario-based-training-guides-package>



# Care Coordination 2023

- Re-admission/Ed Trip Workgroups
  - Overview
  - Infection-related
  - Fall-related
- QAPI
- Across the continuum of care
- Communication
- End-of-life care planning
- Awareness



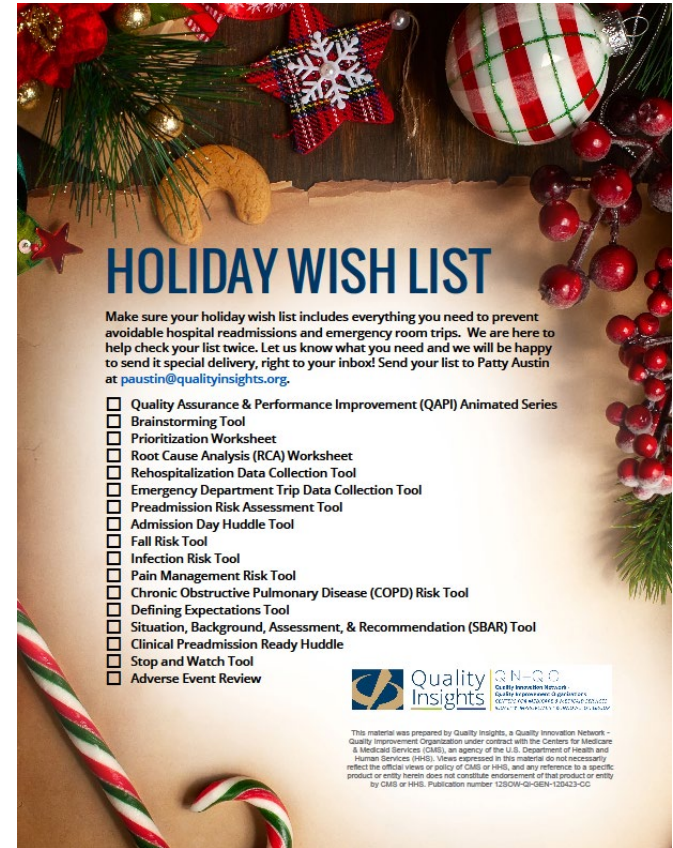
# Care Coordination 2024

- Work Group- Late January
  - Respiratory Infections
  - Urinary Tract Infections
  - Data focused
  - Scenario based
  - Education
  - Coaching Calls
- Awareness
  - Individual Outreach
  - Resource
  - Process driven



# Resource


- Holiday Wish List
  - <https://www.qualityinsights.org/qin/resources#holiday-wish-list>



## HOLIDAY WISH LIST

Make sure your holiday wish list includes everything you need to prevent avoidable hospital readmissions and emergency room trips. We are here to help check your list twice. Let us know what you need and we will be happy to send it special delivery, right to your inbox! Send your list to Patty Austin at [paustin@qualityinsights.org](mailto:paustin@qualityinsights.org).

- Quality Assurance & Performance Improvement (QAPI) Animated Series
- Brainstorming Tool
- Prioritization Worksheet
- Root Cause Analysis (RCA) Worksheet
- Rehospitalization Data Collection Tool
- Emergency Department Trip Data Collection Tool
- Preadmission Risk Assessment Tool
- Admission Day Huddle Tool
- Fall Risk Tool
- Infection Risk Tool
- Pain Management Risk Tool
- Chronic Obstructive Pulmonary Disease (COPD) Risk Tool
- Defining Expectations Tool
- Situation, Background, Assessment, & Recommendation (SBAR) Tool
- Clinical Preadmission Ready Huddle
- Stop and Watch Tool
- Adverse Event Review

 **Quality Insights** Quality Innovation Network - Quality Improvement Organization

This material was prepared by Quality Insights, a Quality Innovation Network - Quality Improvement Organization under contract with the Centers for Medicare & Medicaid Services (CMS), an agency of the U.S. Department of Health and Human Services (HHS). Views expressed in this material do not necessarily reflect the official views or policy of CMS or HHS, and any reference to a specific product or entity herein does not constitute endorsement of that product or entity by CMS or HHS. Publication number 120019-QI-GEN-120423-00



Any questions or comments?



# Contact information



- Penny Imes
  - Email: [pimes@qualityinsights.org](mailto:pimes@qualityinsights.org)
- Patty Austin
  - Email: [paustin@qualityinsights.org](mailto:paustin@qualityinsights.org)
- Shirley Sullivan
  - Email: [ssullivan@qualityinsights.org](mailto:ssullivan@qualityinsights.org)
- Debra Wright
  - Email: [dwright@qualityinsights.org](mailto:dwright@qualityinsights.org)
- Jennifer Brown
  - Email: [jbrown@qualityinsights.org](mailto:jbrown@qualityinsights.org)

Visit: <https://www.qualityinsights.org/qin>



This material was prepared by Quality Insights, a Quality Innovation Network - Quality Improvement Organization under contract with the Centers for Medicare & Medicaid Services (CMS), an agency of the U.S. Department of Health and Human Services (HHS). Views expressed in this material do not necessarily reflect the official views or policy of CMS or HHS, and any reference to a specific product or entity herein does not constitute endorsement of that product or entity by CMS or HHS. Publication number 12SOW-QI-GEN-120623-CC-B

