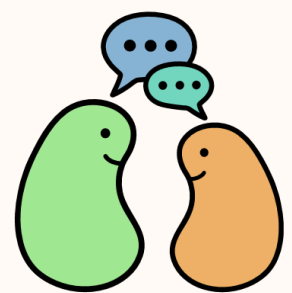


Gift of Life
Empowering
Living Kidney Donation



Kidney Donor
Conversations

www.MyKDC.org

Continuing Education

- To complete the course, the learner must:
 - Watch the 60-minute webinar (live or recorded)
 - Complete evaluation & post-test questions
- Social Worker CEs approved by ASWB.
- Glenna Frey speaker for this webinar, is on the speaker's bureau for American Nephrology Nurses' Association. All relevant financial relationships listed were mitigated.



Learning Outcomes

- After this course, the learner will:
 - Discuss the emotional and psychological rewards of being a living kidney donor
 - Describe strategies for addressing the challenges donors might face including time off from work, travel expenses, and childcare
 - Explain donor insurance and protections in place to safeguard living kidney donors



Sessions

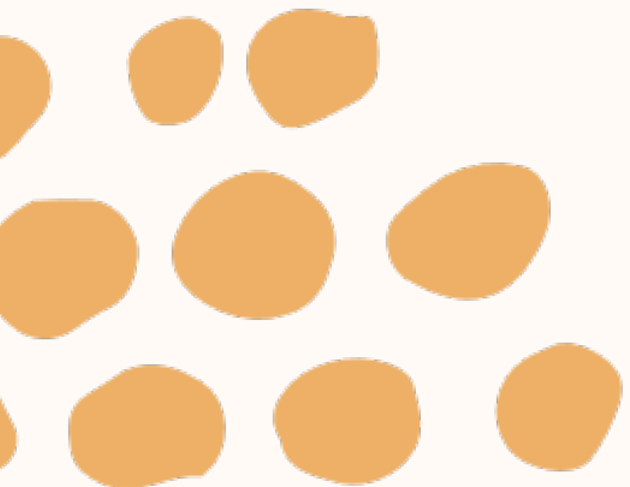
- Advancements and Challenges in Kidney Transplant: Empowering Patients and Professionals
- Pathway to Giving: Understanding the Living Kidney Donor Process
- Giving Life, Exploring Impact: Benefits and Considerations for Living Kidney Donors
- Finding a Lifesaving Match: Strategies for Finding a Living Kidney Donor



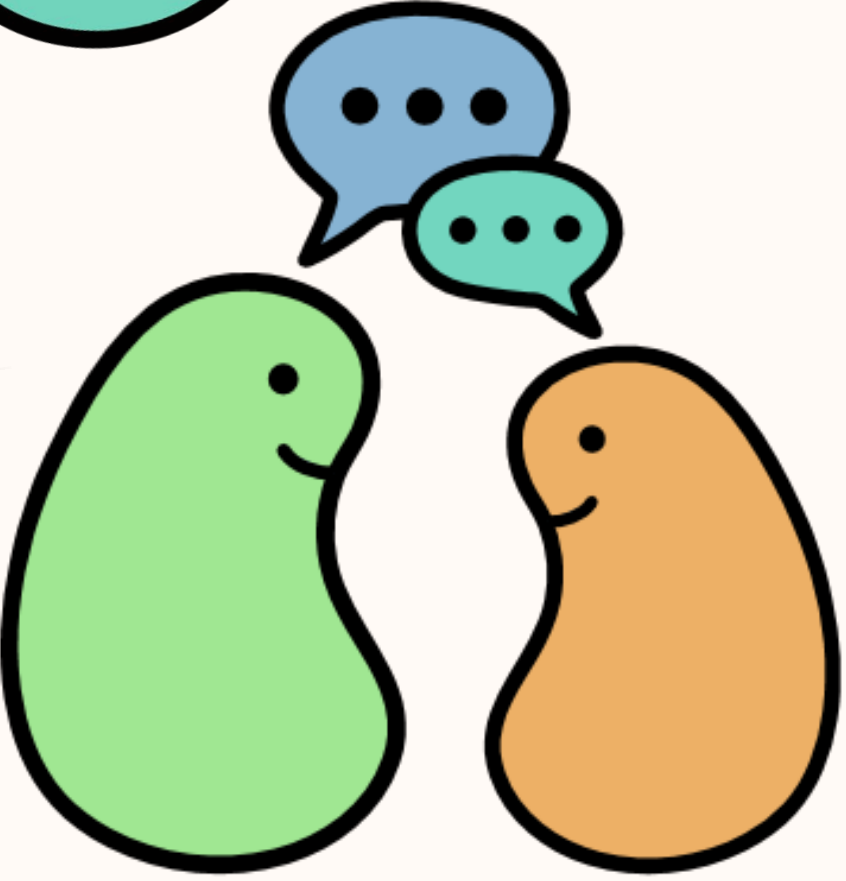
Session 3



Giving Life, Exploring Impact: Benefits and Considerations for Living Kidney Donors



Polling Question
#1



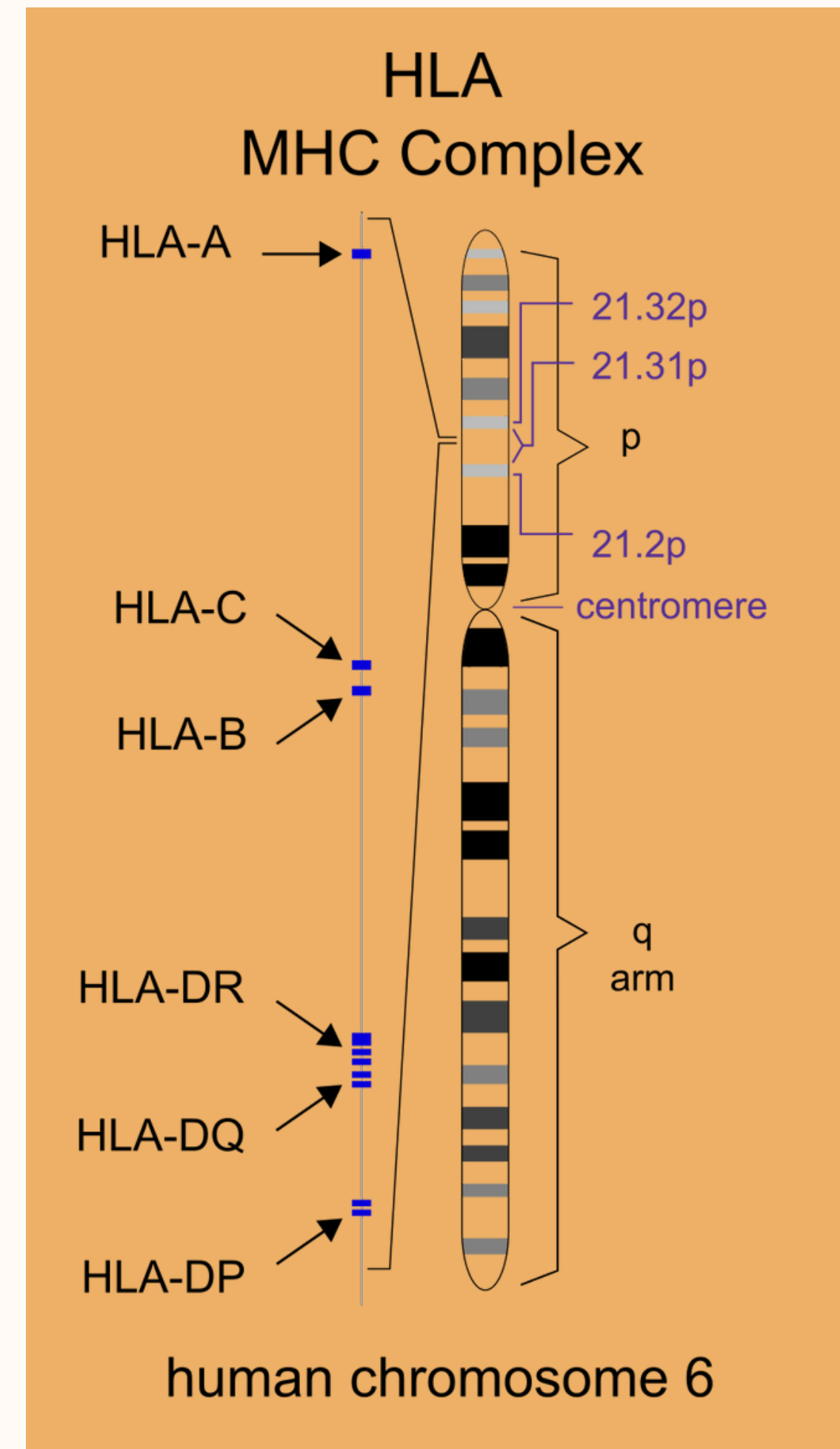
You can lead a healthy life
with one kidney!



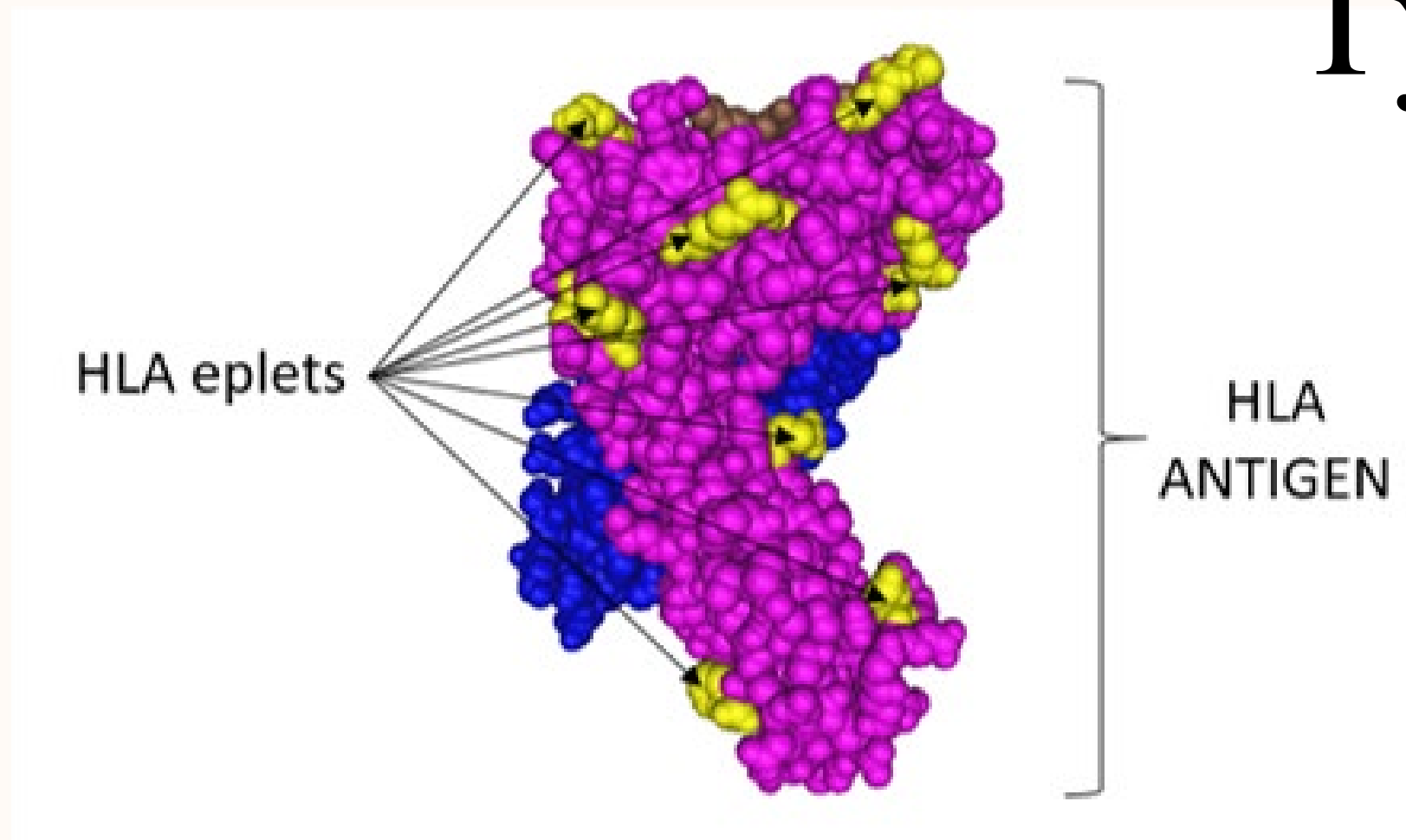
How can a kidney have the longest life in a recipient?



Typical HLA Tissue Typing



High Resolution Tissue Typing



The most effective method of determining the best match is by comparing eplets.

Higher Eplet Mismatch (~ >10%; best to check with HLA lab)

= More Donor Specific Antigens

= More Rejection

Benefits of Eplet Matching



Reduced Risk Of
De Novo Antibodies



Lower Risk Of
Rejection



Less Risk Of
Graft Failure



Opportunity For Safely
Reducing Immunosuppression



Fewer Side Effects From
Immunosuppressive Medication

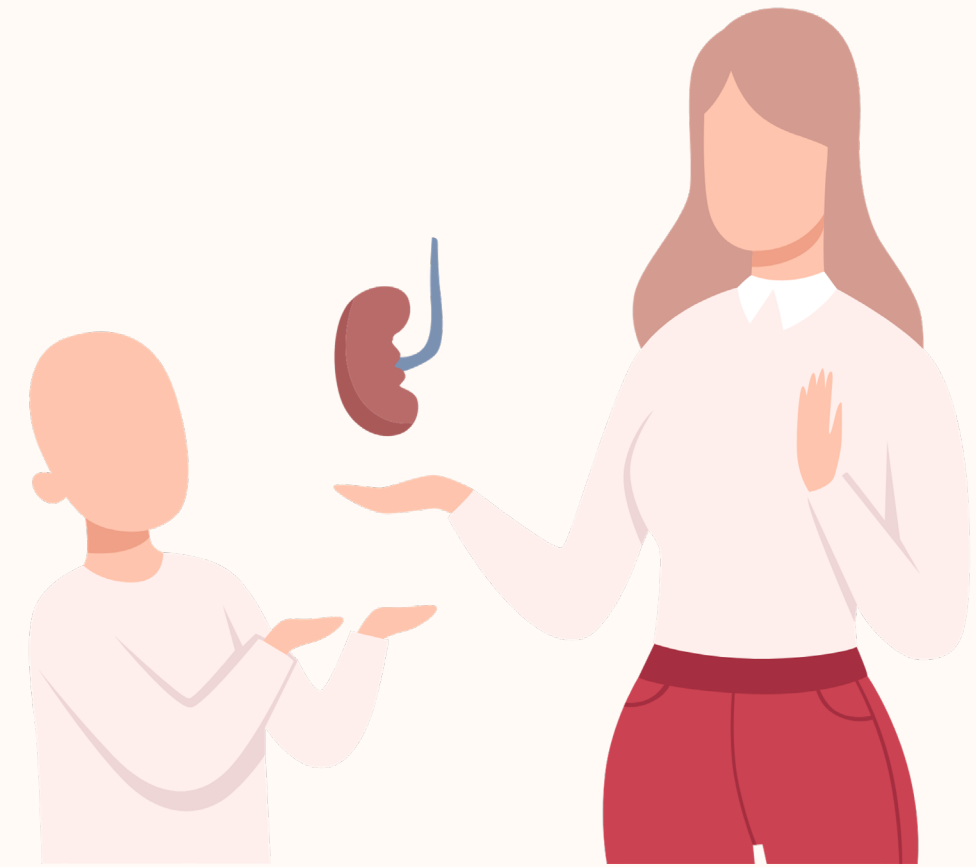


KIDNEY FOR LIFE[®]
BETTER MATCHES = BETTER OUTCOMES

<https://www.kidneyforlife.org>

What are the benefits of donating a kidney?

- Boost in self-esteem
- Increased sense of well-being
- Improved relationship with recipient
- Almost every donor says they would do it again if they could



All participants acknowledged that the benefits of donation, whether experienced by themselves or the recipient, outweighed the peri- and postoperative risks as they understood them.

Van Pilsum Rasmussen SE, Robin M, Saha A, Eno A, Lifshitz R, Waldram MM, Getsin SN, Chu NM, Al Ammary F, Segev DL, Henderson ML. The Tangible Benefits of Living Donation: Results of a Qualitative Study of Living Kidney Donors. *Transplant Direct*. 2020 Nov 10;6(12):e626. doi: 10.1097/TXD.0000000000001068. PMID: 33204824; PMCID: PMC7665258.

What is the risk of donating a kidney?



- Risk of death in surgery is 0.03%
 - Same as for childbirth
 - Gall bladder is higher at 0.18%
- Slightly higher risk of high blood pressure in pregnancy (preeclampsia)
- Donors live as long, or even longer than, the general population
 - because they are healthier

Lentine et al. Clin J Am Soc Nephrol. 2019;14: 597–608.

Ibrahim et al. N Engl J Med. 2009;360:459-69.

Gaston et al. J Am Soc Nephrol. 2015; 26: 1017–1019.

Dew et al. Adv Chronic Kidney Dis. 2012; 19(4): 237–243. 5. Purnell et al. Adv Chronic Kidney Dis. 2012; 19(4): 244–251

What is the risk of donating a kidney?



- Risk of ESKD after 15 yrs. on average 0.27%;
 - Risk Index Calculator at www.transplantmodels.com/esrdrisk
 - Points on the deceased kidney transplant list if need a kidney after donating
 - Some non-directed donors can get living kidney transplant through some registries

Lentine et al. Clin J Am Soc Nephrol. 2019;14: 597–608.

Ibrahim et al. N Engl J Med. 2009;360:459-69.

Gaston et al. J Am Soc Nephrol. 2015; 26: 1017–1019.

Dew et al. Adv Chronic Kidney Dis. 2012; 19(4): 237–243. 5. Purnell et al. Adv Chronic Kidney Dis. 2012; 19(4): 244–251

Living Donor Collective



- Performance of transplant programs
- Registry of donors and potential donors
 - Assess long term outcomes
- Living Donor Advisory Committee

www.livingdonorcollective.org

What is the cost of donating a kidney?



Donor and Support Person

- Transportation (car, air, parking, etc.)
- Hotel, food
- Time off work
- Dependent Care (child, parent, pet)
- Workup, Pre-Op Visit, Surgery, Recovery, Follow-up

Costs exceeded:

- \$1000 for nearly 75% of donors
- \$5500 for 25% of donors
- \$10,000 for 13% of donors

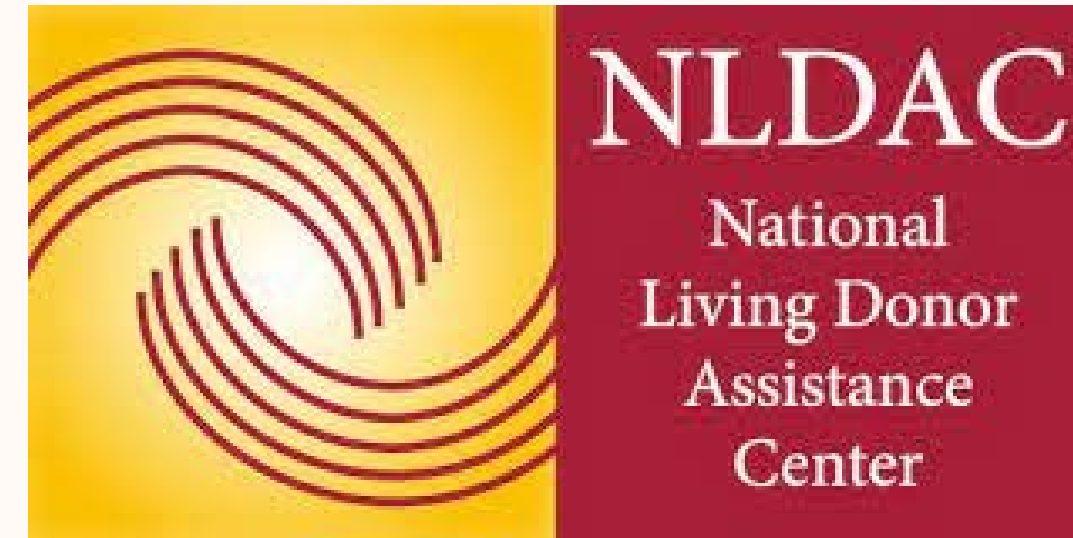
Financial Assistance for Living Donors



Recipient

Reimbursement to people being evaluated for and/or undergoing living organ donation of:

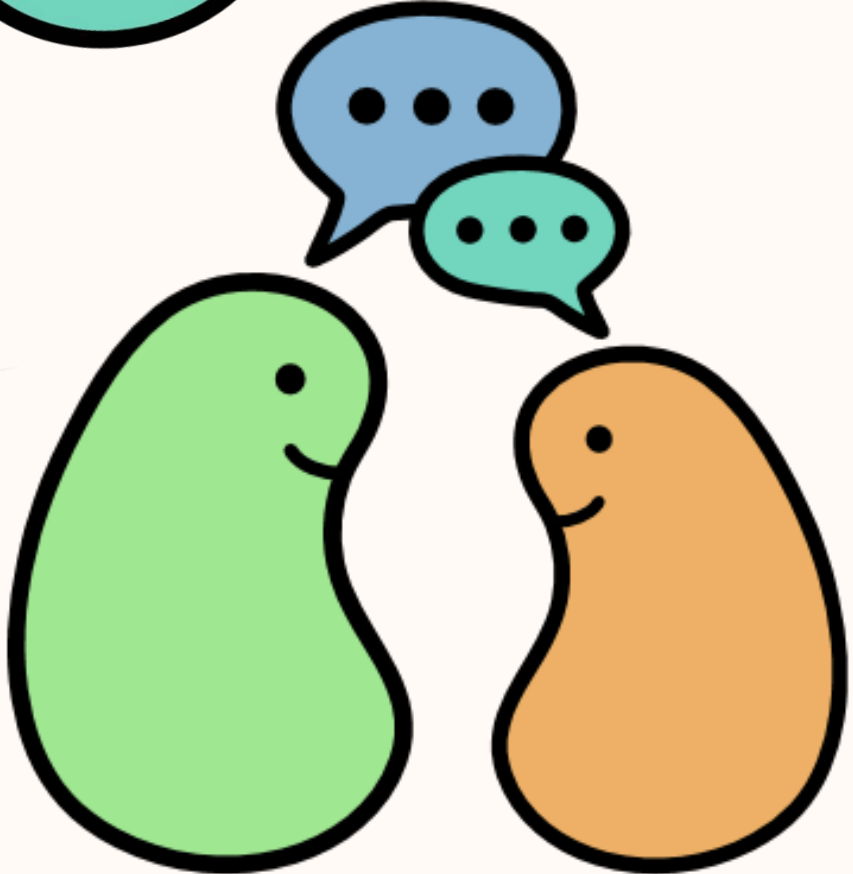
- travel and subsistence expenses
- lost wages
- dependent care expenses

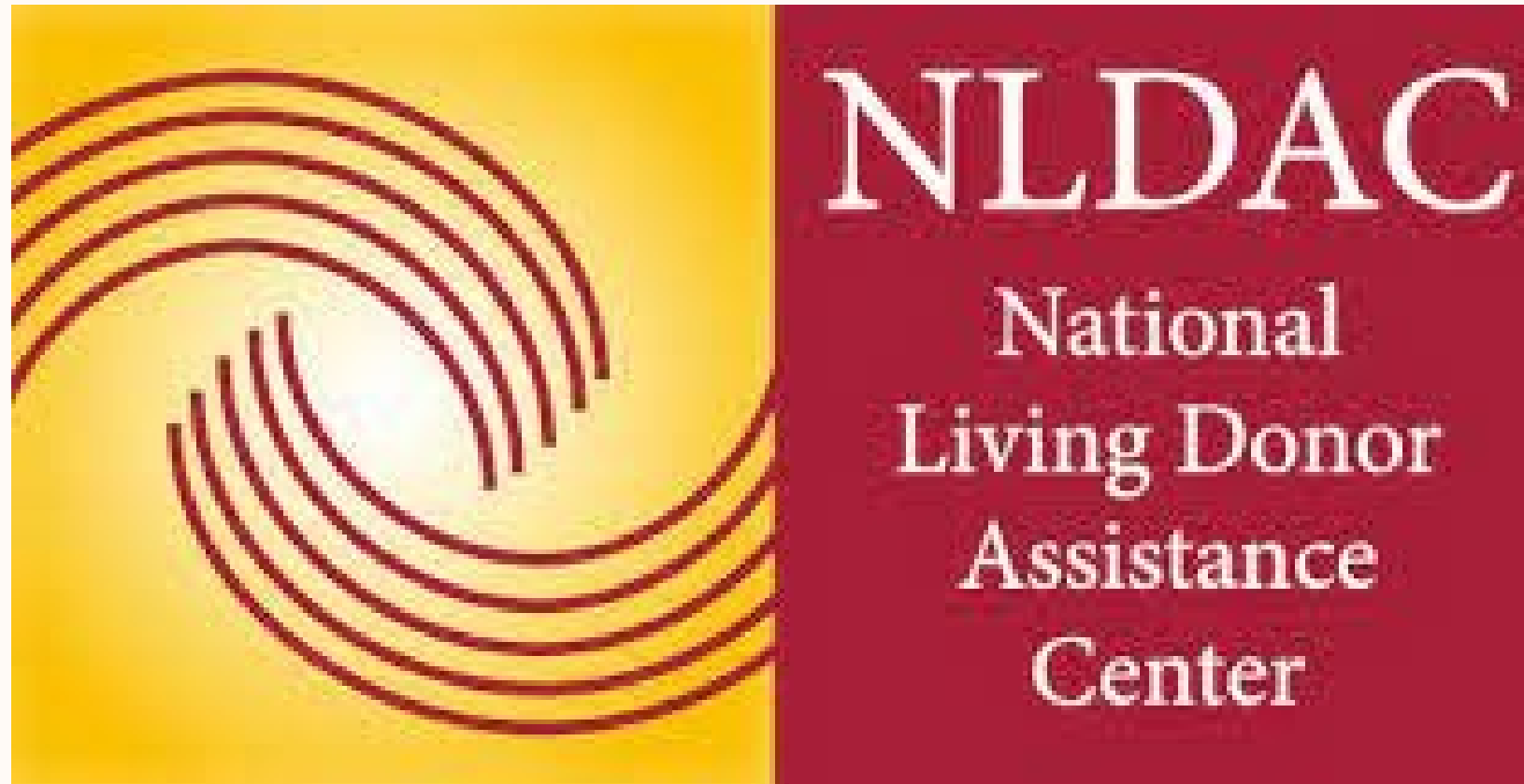


Family, Friends, Community Fundraising



Polling Question
#2





Reduce the financial disincentives to living organ donation.
Priority is given to those who could not otherwise afford to donate.

Based on the recipient's income.

- Not be more than 350% of the current HHS Poverty Guidelines (family of two \$70,000)
- Start when the workup starts; must be submitted before surgery

Non-directed donors can apply

www.livingdonorassistance.org





submit a financial hardship waiver worksheet.

English

Spanish

Recipient Financial Hardship Waiver Worksheet



Give these documents to your transplant coordinator, social worker or other transplant professional.

The transplant professional will file the NLDAC application the donor's behalf. *Do not send completed worksheets to NLDAC. We do not accept applications from patients.*

NLDAC cannot reimburse expenses that have already occurred. We recommend completed applications be submitted as early as 6-8 weeks before travel or surgical procedure.

www.livingdonorassistance.org



HOLD Act

- HR 6020 Honor Our Living Donors Act 2023
 - Help more donors qualify for reimbursement
 - Change NLDAC guidelines that is based on the income of the intended recipient.
 - Use donors income to determine eligibility

[HOLD Act](#)

Legislation



Examples: hr5, sres9, "health care"

MORE C

[Home](#) > [Legislation](#) > [98th Congress](#) > S.2048

S.2048 - National Organ Transplant Act

98th Congress (1983-1984)

NOTA

Title III: Prohibition of Organ Purchase - Prohibits the purchase or sale of human organs if such transfer affects interstate commerce. Establishes criminal penalties for such violations.

Living Organ Donor Tax Credit Act



- HR 6171 Living Organ Donor Tax Credit Act 2023
- Provide up to a \$5,000 one-time refundable tax credit to living organ donors.

[Living Organ Donor Tax Credit Act](#)

Refundable tax credit means you receive the amount regardless of how much income tax you pay.



HEROS Act



- Helping End the Renal Organ Shortage (not yet introduced)
 - All living donors of kidneys will receive \$100,000 in the form of a refundable federal tax credit.
 - Uniformly applied over a period of 10 years in the amount of \$10,000 per year.

[HEROS Act](#)


Living Donor Insurance & Protections

- Employer Benefits
- Transplant Center Benefits
- State Benefits
- Registry Benefits

Living Donor Circle of Excellence




**Learn about the
AST Living
Donor Circle of
Excellence**



Thanks NKF for providing a link to share about the Circle

If your company is interested in joining the Circle of Excellence, request more information or apply today!



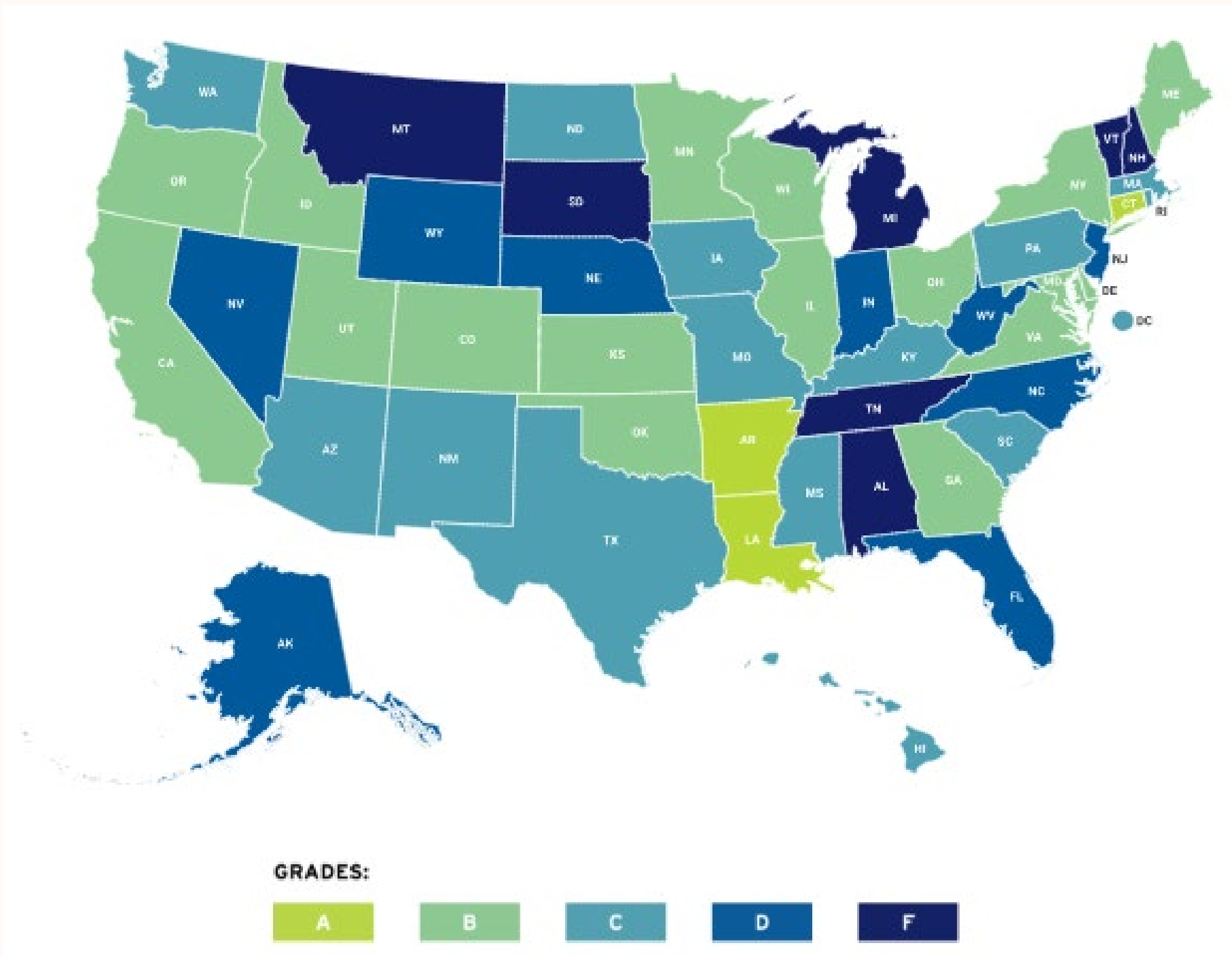
NATIONAL KIDNEY FOUNDATION

Corporate Recognition Program

- Policies should include salary support for a minimum of 4 weeks
- Minimum proportion of wage support is 80%; companies may elect to support more
- Annual confirmation of support and report to the American Society of Transplantation

www.livingdonorcircle.com

<https://livingdonor.kidneyfund.org>



State benefits

Tax Credit

Job Protections

Reimbursement

FMLA

Insurance



DonorProtect Program

www.paireddonation.org

Donor Shield

www.kidneyregistry.org



Donor Protections Comparison

- Lost Wage Reimbursement
- Travel/ Dependent Care
- Complication Protection
- Voucher Program
- Disability Insurance
- Support Person Insurance

APKD



NKR



Donor Protections Comparison

	APKD	NKR
<u>Remote Donation</u>	✘	☑
<u>Best Match</u>	✘	☑
<u>Legal Support</u>	✘	☑
<u>Home Blood Draws</u>	✘	☑
<u>Living Donor Support Person</u>	✘	☑
<u>Living Kidney Prioritization</u>	✘	☑



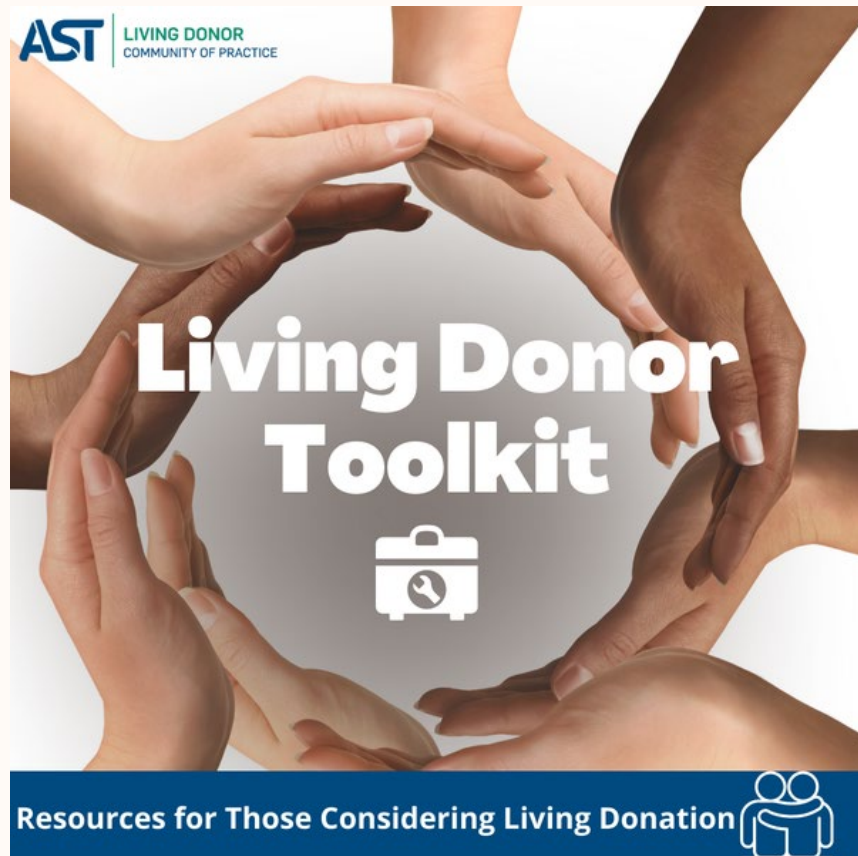
FREE access to top of-the-line
weight loss and smoking cessation resources

www.projectdonor.org



AST

AMERICAN SOCIETY OF[®]
TRANSPLANTATION



Financial Tool Kit

- Work
- Insurance
- Finances (Living Organ Donor Cost Estimation Worksheet)

Medical Tool Kit

- Evaluation
- Experience

www.livingdonortoolkit.com



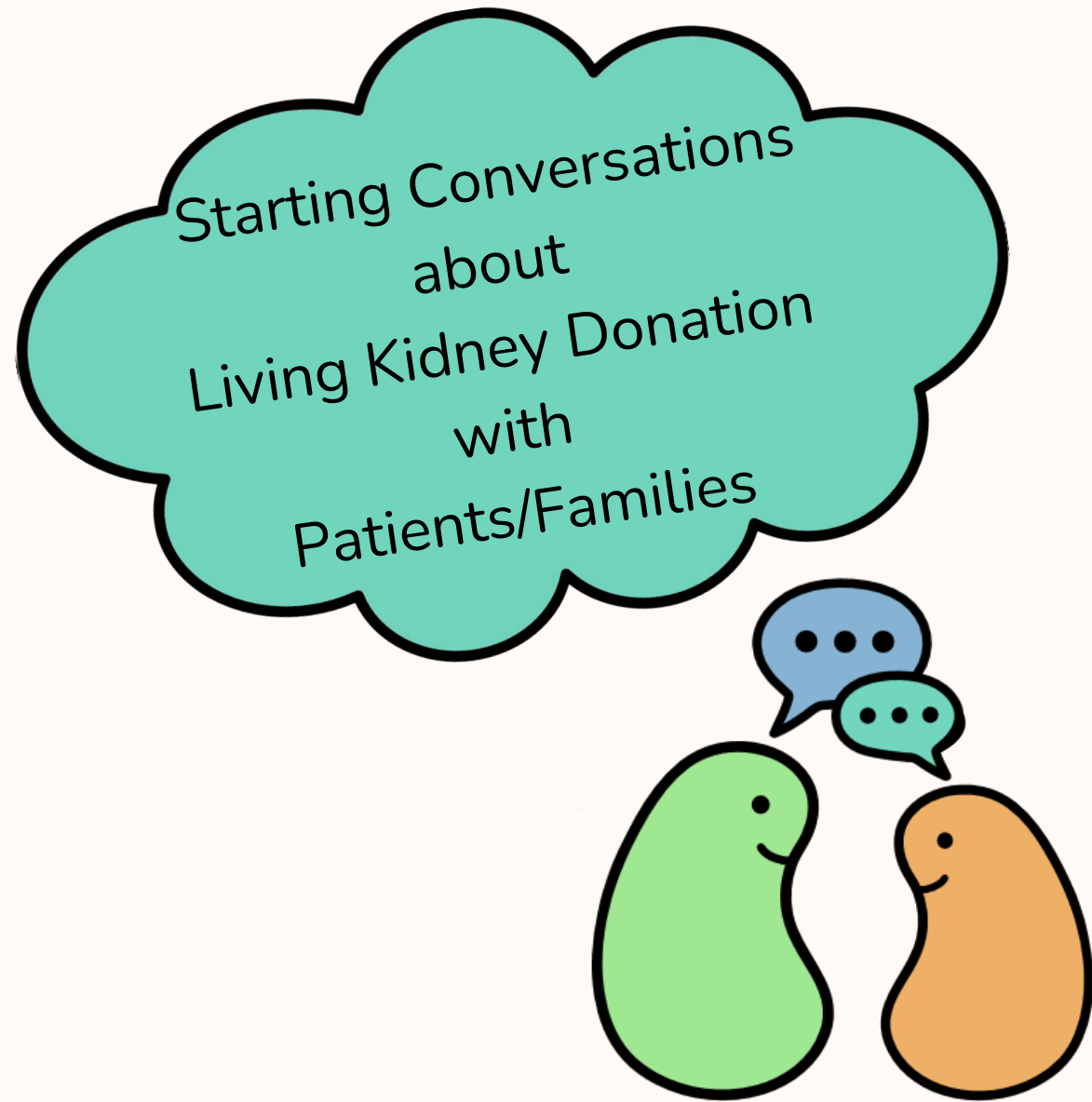
Informs, Assists, Supports,
and Advocates for
Multicultural Living Donors and
Families of Deceased Donors.

www.mmdfoundation.org



Living Kidney Donor Peer Support



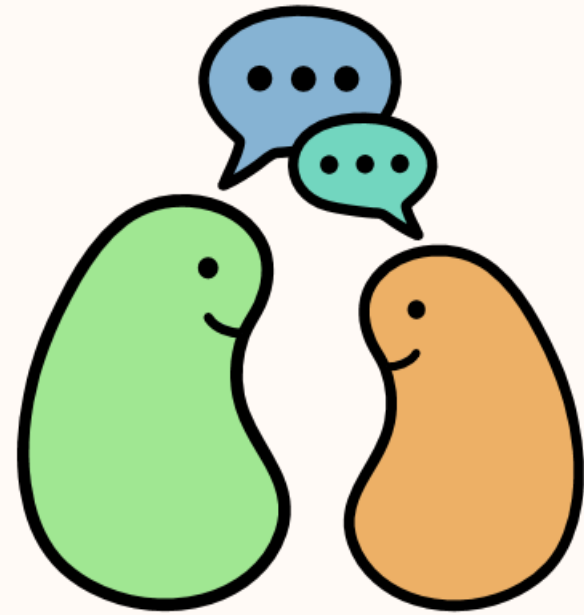


What have you been told about living kidney donor:

- ? Benefits
- ? Cost
- ? Financial Resources/Protections - employer, state, registries, fundraisers
- ? Support Resources - organizations
- ? High Resolution Tissue Typing



Thank you!



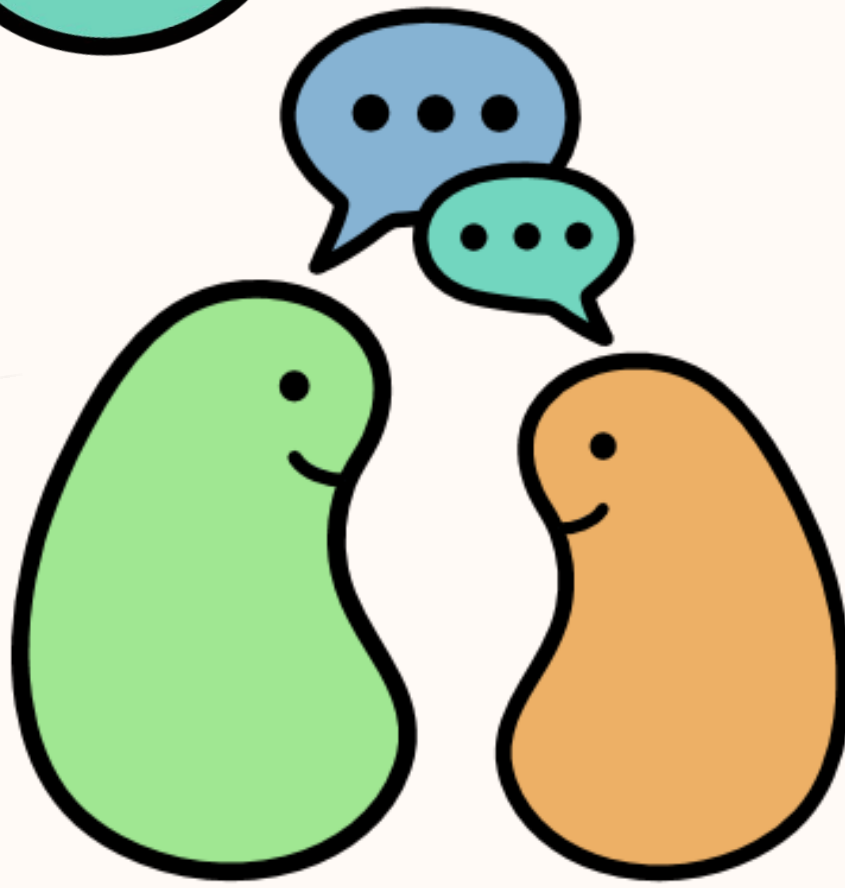
Kidney Donor Conversations

www.MyKDC.org

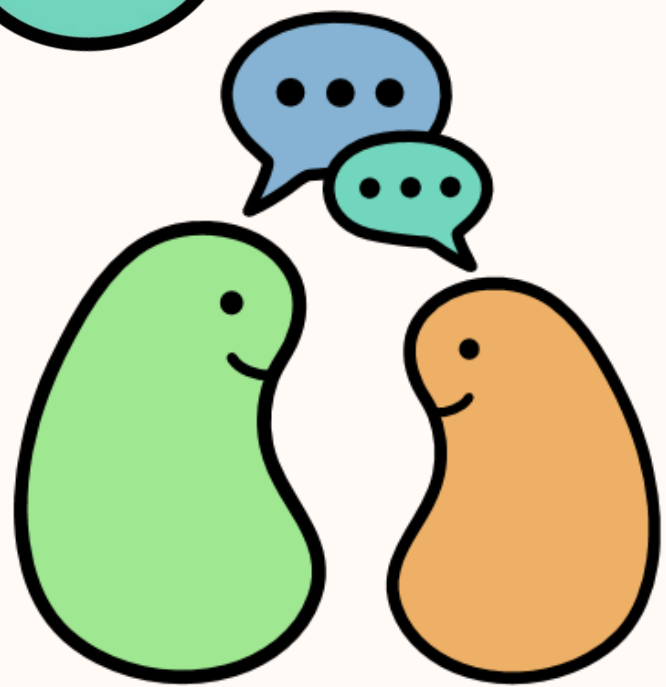
Mission: To provide education and
support for living kidney donation
501(c)(3) nonprofit

Glenna Frey, MSN, APRN-CNS
Executive Director
Glenna@MyKDC.org

Polling Question
#3



Starting Conversations
about
Living Kidney Donation
with
Patients/Families



What are Your Concerns?

Next Month ...



Evaluation and Post-Knowledge Check

- Link to the evaluation
 - <https://www.surveymonkey.com/r/KX52BXP>
 - Social Worker CEs approved from ASWB



QR Code

Activate the camera on your smart phone and scan this QR code to link to the **evaluation**



NEXT

Session 4

Finding a Lifesaving Match: Strategies for Finding a Living Kidney Donor

