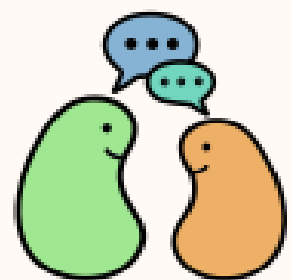


Gift of Life
Empowering
Living Kidney Donation



Kidney Donor
Conversations
www.MyKDC.org

Sessions

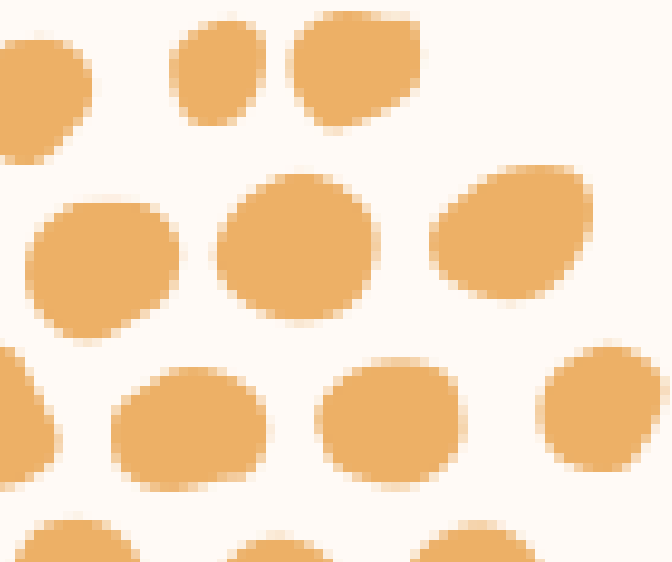
- Advancements and Challenges in Kidney Transplant:
Empowering Patients and Professionals
- **Pathway to Giving: Understanding the Living Kidney Donor Process**
- Giving Life, Exploring Impact: Benefits and Considerations for Living Kidney Donors
- Finding a Lifesaving Match: Strategies for Finding a Living Kidney Donor



Session 2

Pathway to Giving:

Understanding the Living
Kidney Donor Process



Continuing Education



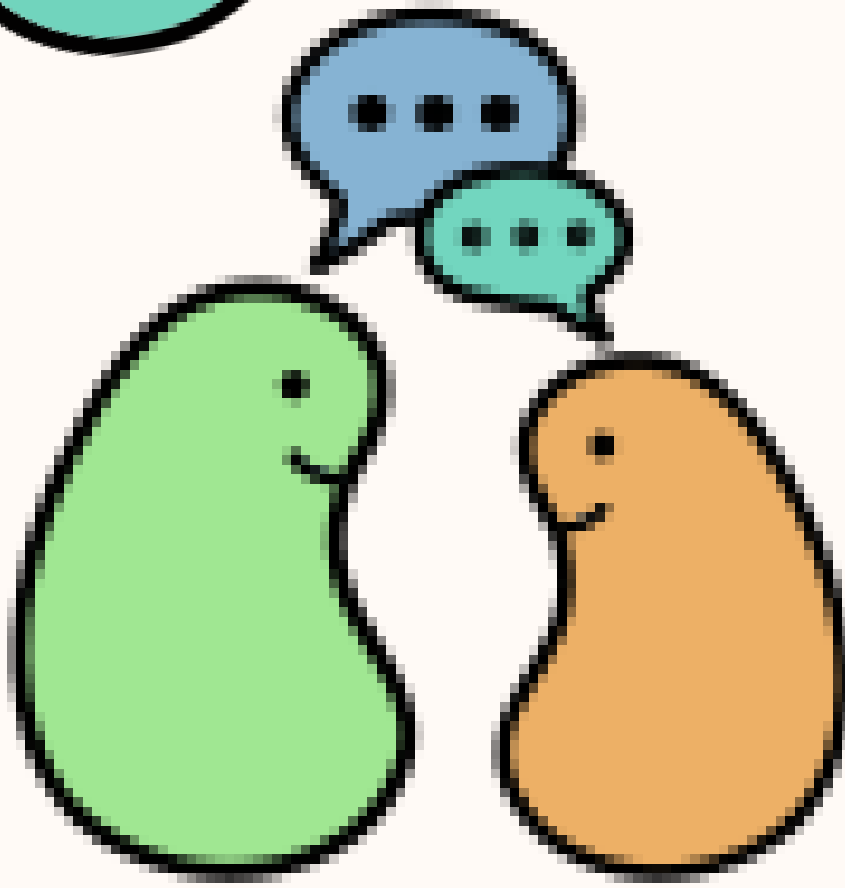
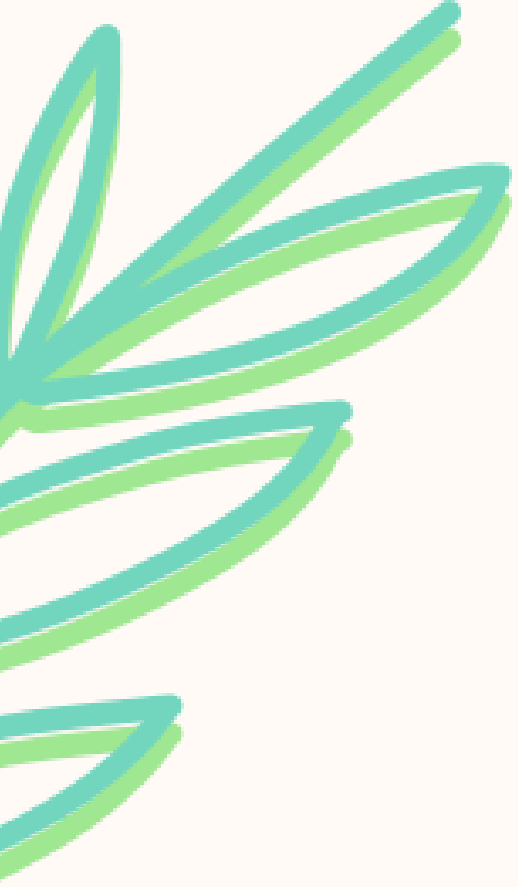
- To complete the course, the learner must:
 - Watch the 60-minute webinar (live or recorded)
 - Complete evaluation & post-test questions
- Social Worker CEs approved by ASWB.
- Glenna Frey speaker for this webinar, is on the speaker's bureau for American Nephrology Nurses' Association. All relevant financial relationships listed were mitigated.

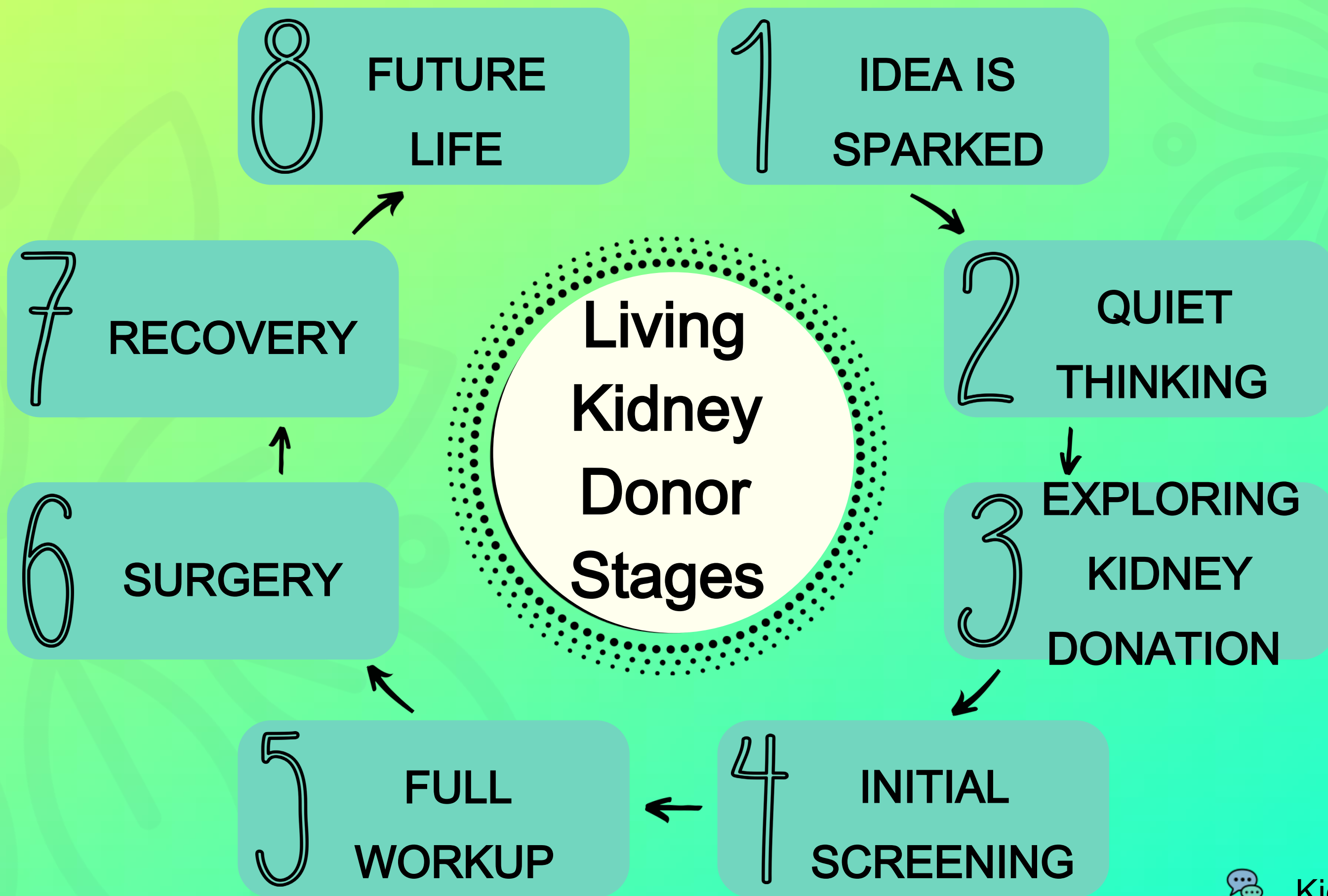
Learning Outcomes

- After this course, the learner will:
 - Discuss the comprehensive medical, psychological, and social evaluations that are required for kidney donation
 - Describe voucher options to allow donors to donating a kidney for a loved one's future use or for a stranger in need
 - Explain the living donation process from initial inquiry to post-donation follow-up



Polling Question
#1







1 IDEA IS SPARKED
hear a story

Living
Kidney
Donor
Stages



Kidney Donor
Conversations

www.MyKDC.org

1 IDEA IS SPARKED



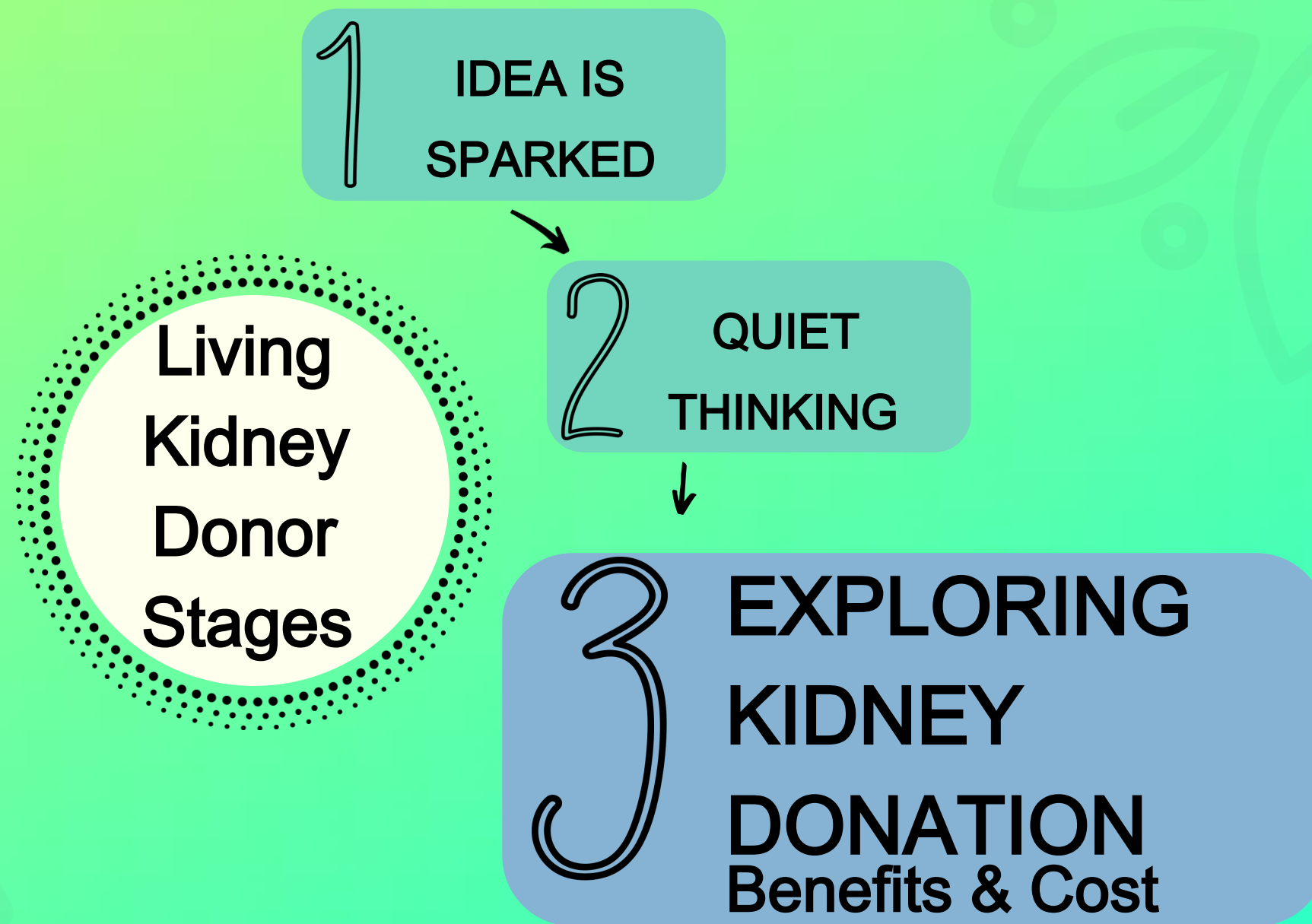
Living
Kidney
Donor
Stages

2 QUIET THINKING
considering
the idea



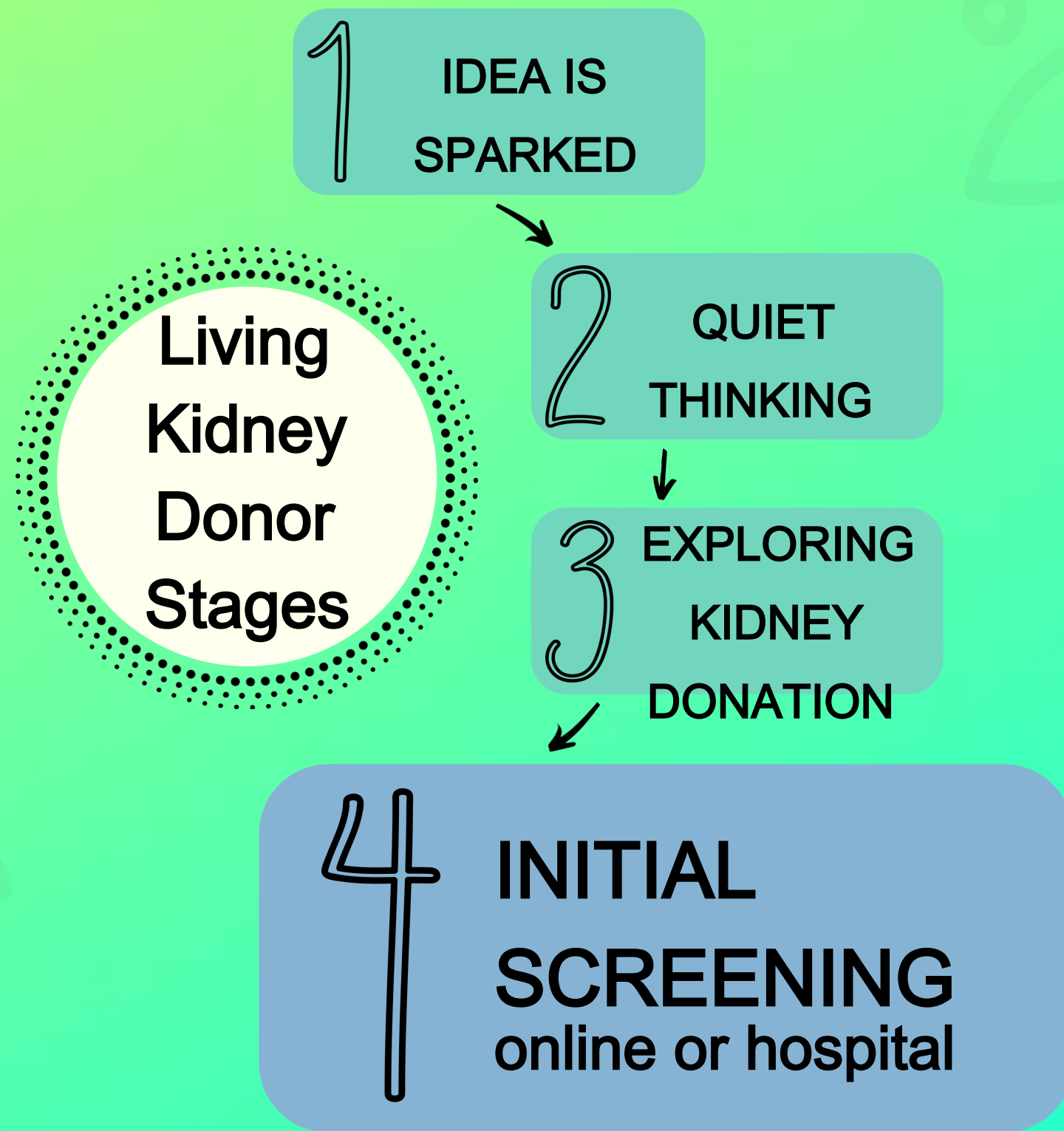
Kidney Donor
Conversations

www.MyKDC.org

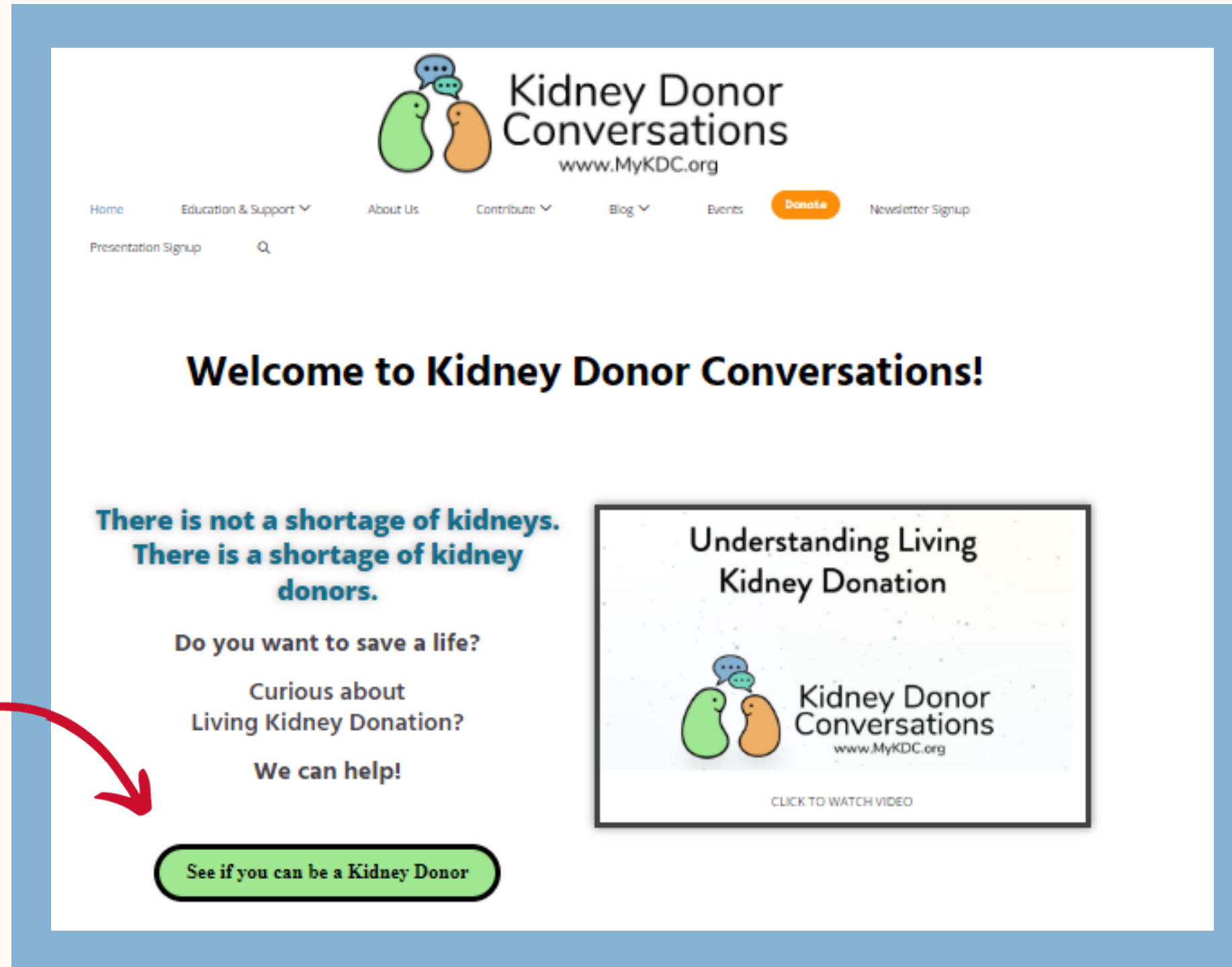


Kidney Donor
Conversations

www.MyKDC.org



Online Questionnaires



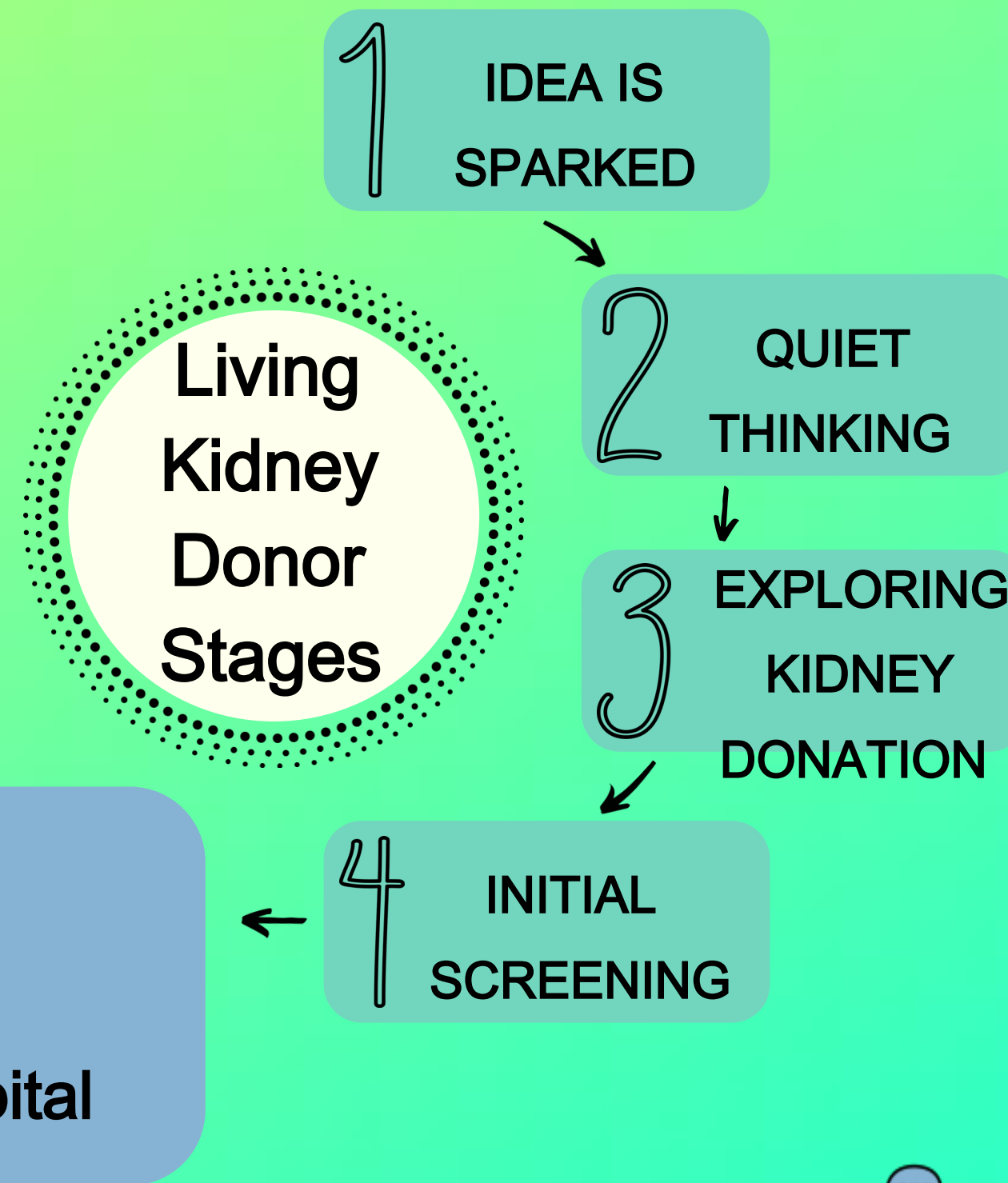
The screenshot shows the homepage of Kidney Donor Conversations. At the top, there is a logo with two stylized kidneys (one green, one orange) and the text "Kidney Donor Conversations" and "www.MyKDC.org". Below the logo is a navigation menu with links for Home, Education & Support, About Us, Contribute, Blog, Events, a prominent orange "Donate" button, and Newsletter Signup. A search bar is located below the navigation. The main heading reads "Welcome to Kidney Donor Conversations!". Below this, there is a message: "There is not a shortage of kidneys. There is a shortage of kidney donors." followed by the questions "Do you want to save a life?" and "Curious about Living Kidney Donation?" and the statement "We can help!". A green button with the text "See if you can be a Kidney Donor" is positioned below this text. To the right of this text is a video player thumbnail titled "Understanding Living Kidney Donation" with the Kidney Donor Conversations logo and the URL "www.MyKDC.org". Below the video thumbnail is a "CLICK TO WATCH VIDEO" link.

Transplant Center
Websites



www.MyKDC.org





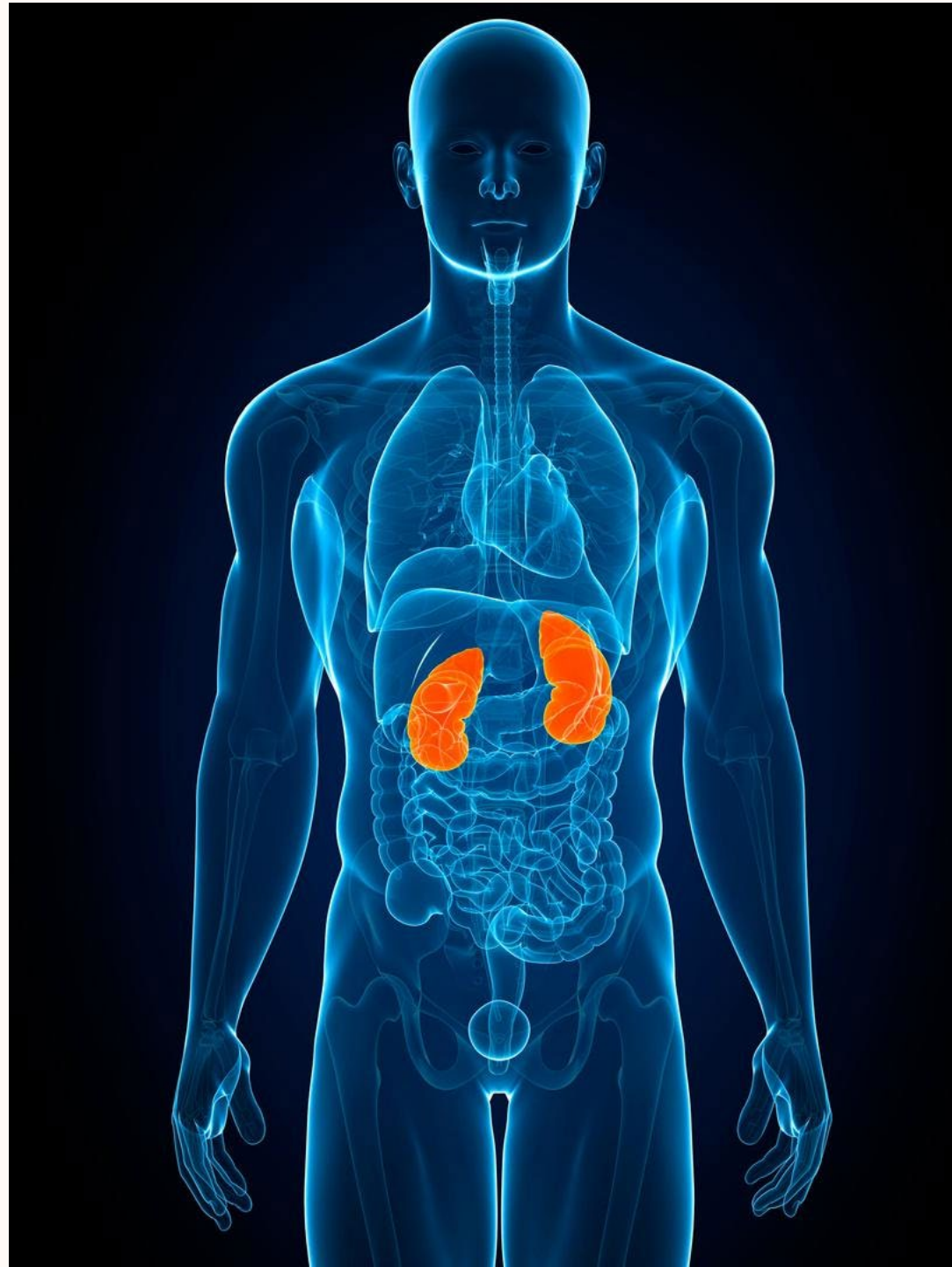
Kidney Donor
Conversations

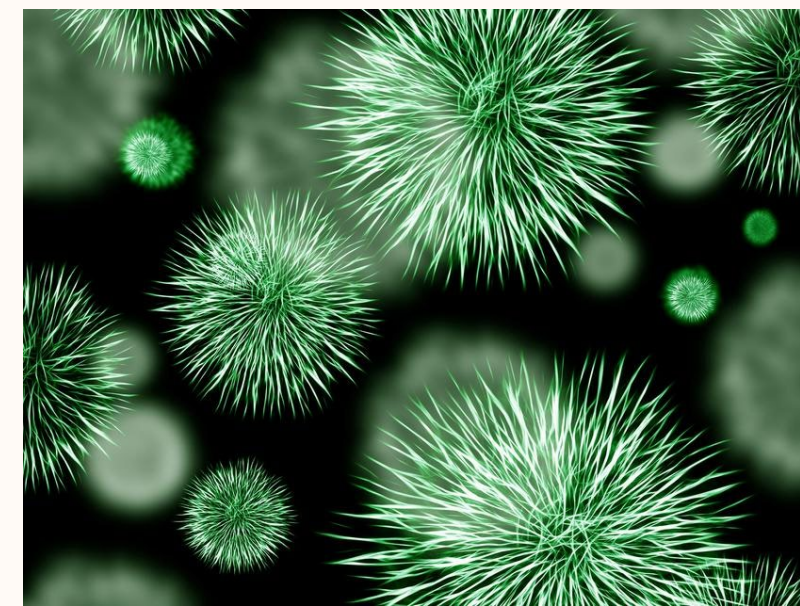
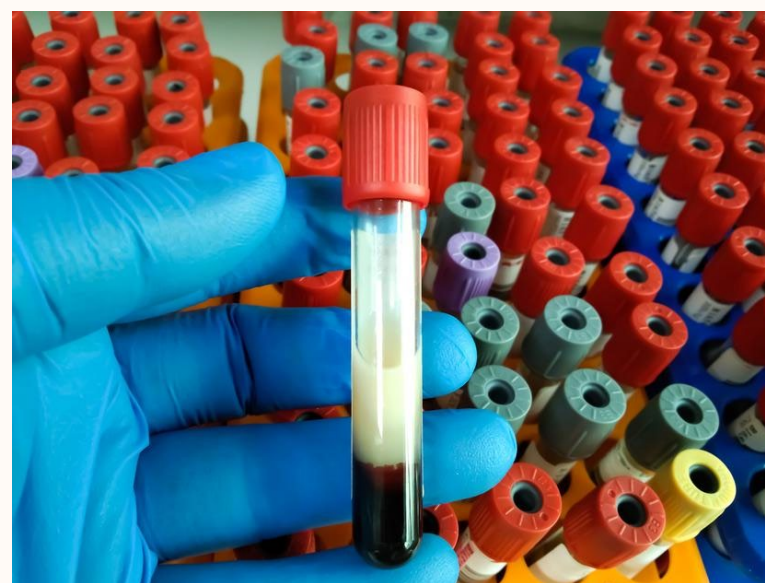
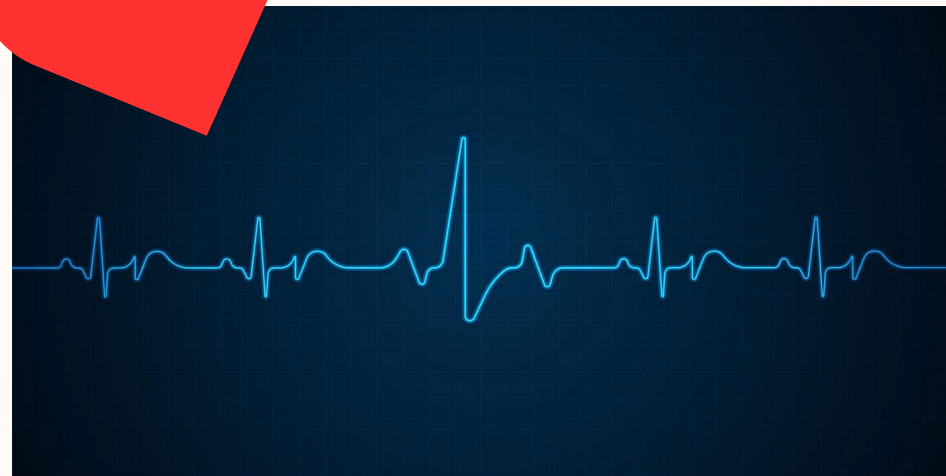
www.MyKDC.org



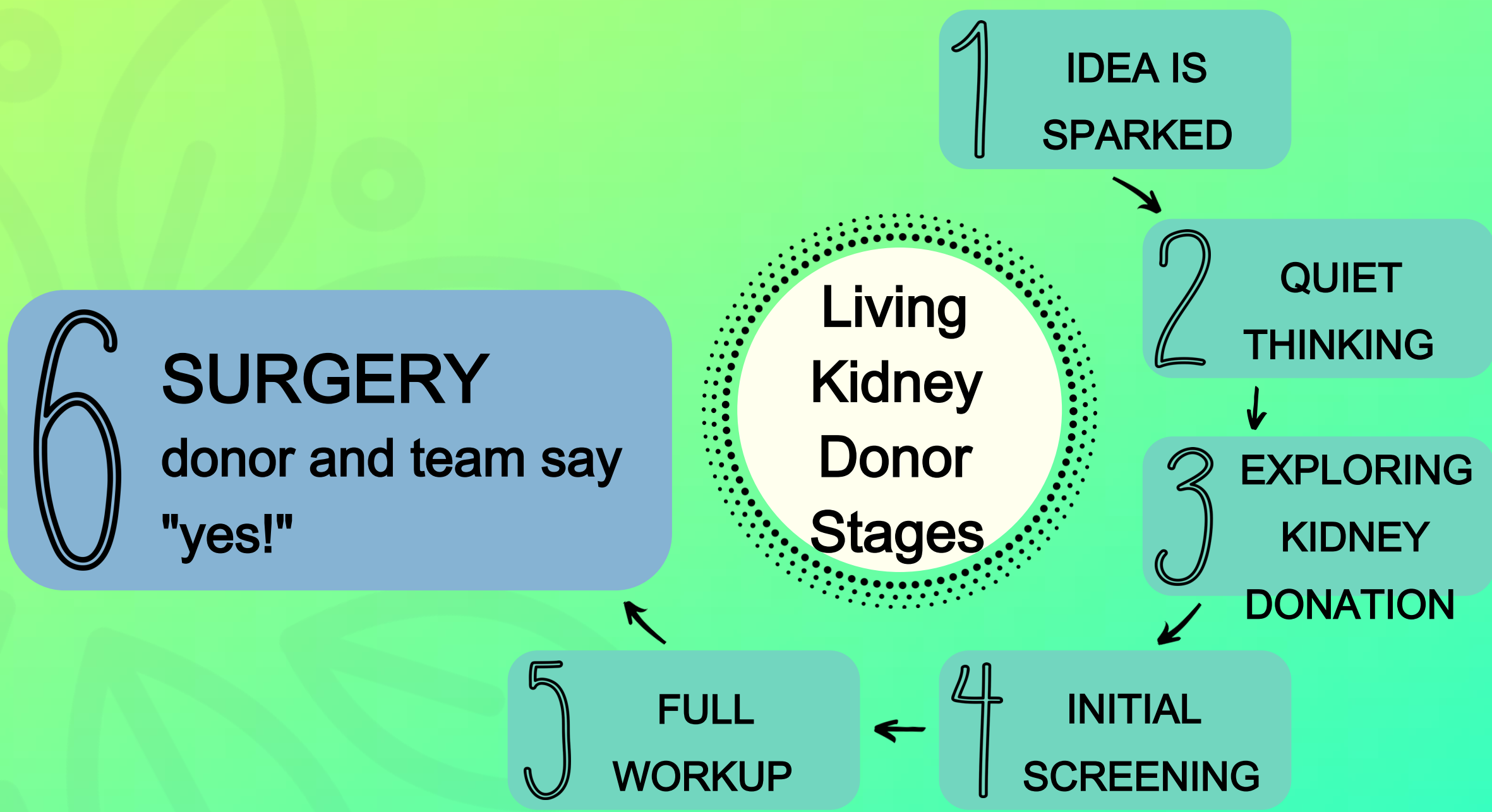


24hrs





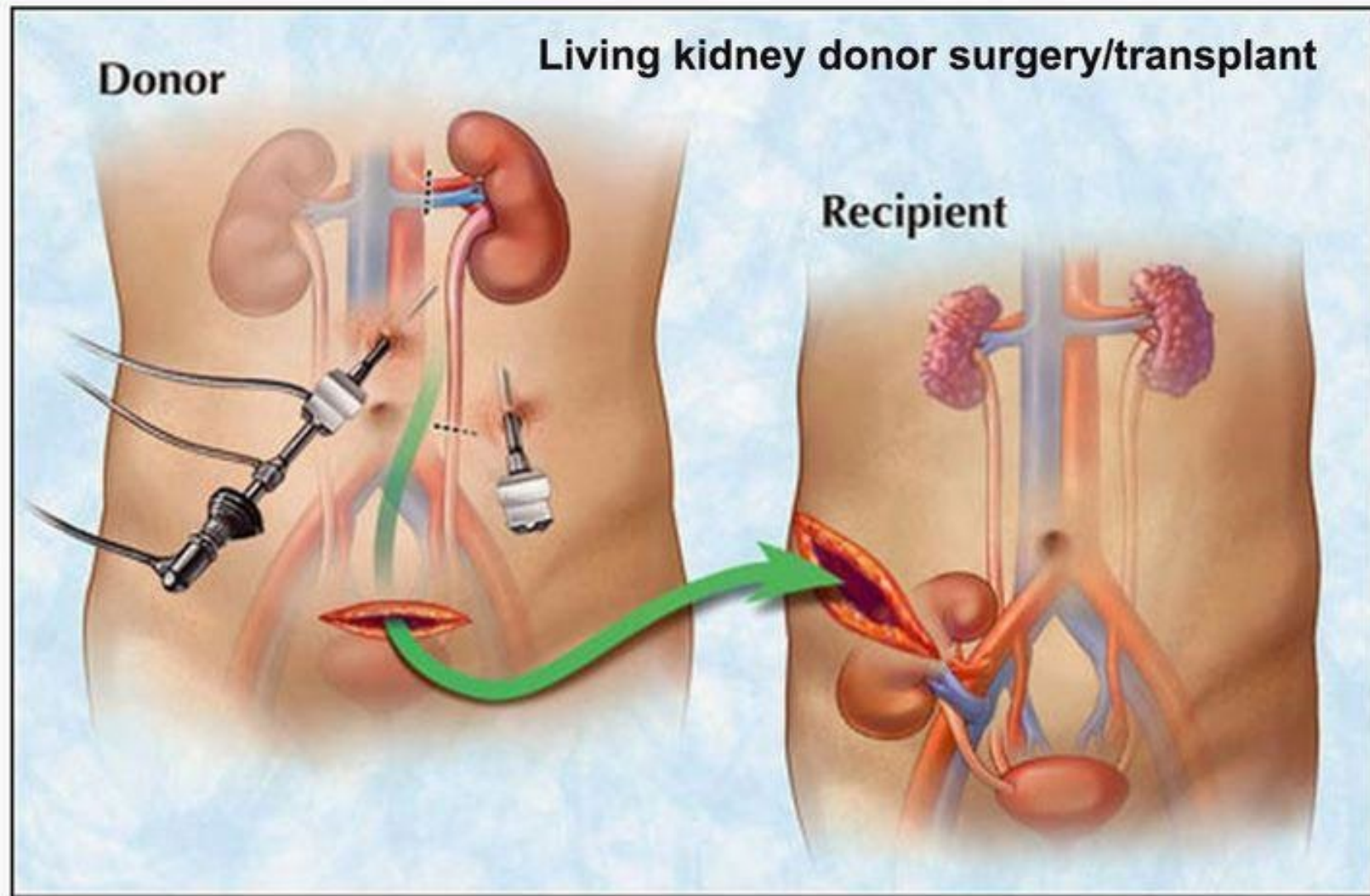




Kidney Donor
Conversations

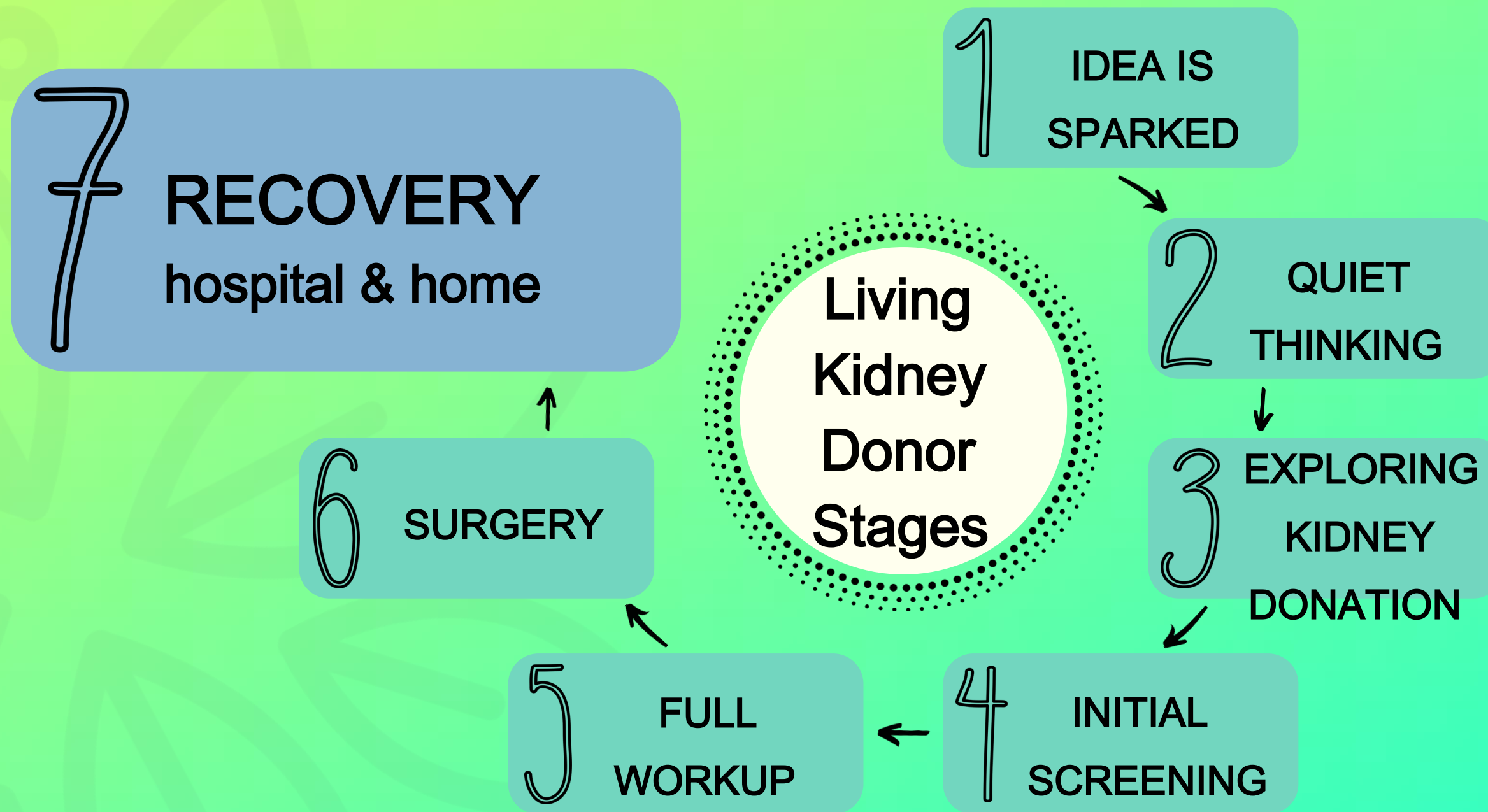
www.MyKDC.org

April 24, 2017



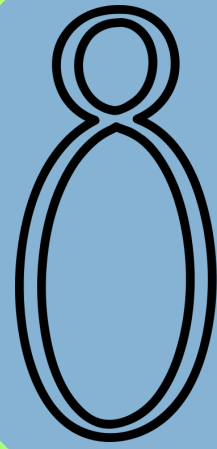
In a procedure called laposcopic donor nephrectomy, a surgeon uses narrow surgical instruments to assist in removing a donor's kidney through a small incision in the abdomen. The kidney is then placed in the front of the recipient's abdomen near the bladder and renal artery.





Kidney Donor
Conversations

www.MyKDC.org



FUTURE LIFE

I'm a living kidney donor

1 IDEA IS SPARKED

2 QUIET THINKING

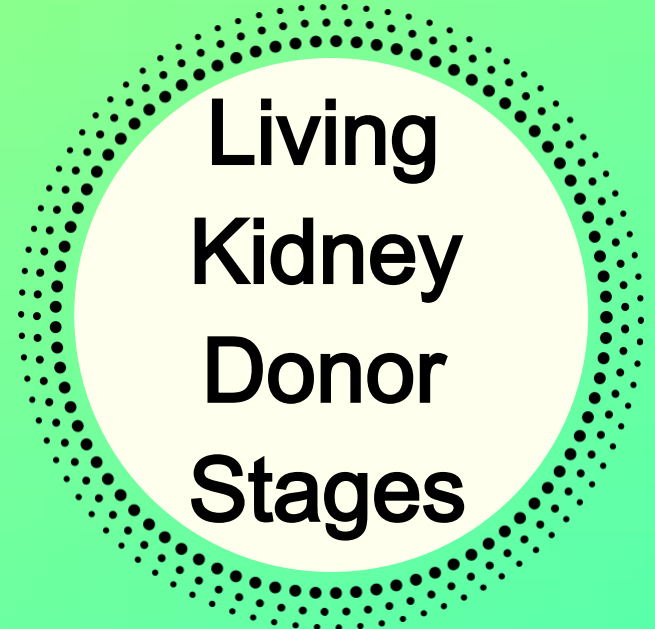
3 EXPLORING KIDNEY DONATION

4 INITIAL SCREENING

5 FULL WORKUP

6 SURGERY

7 RECOVERY

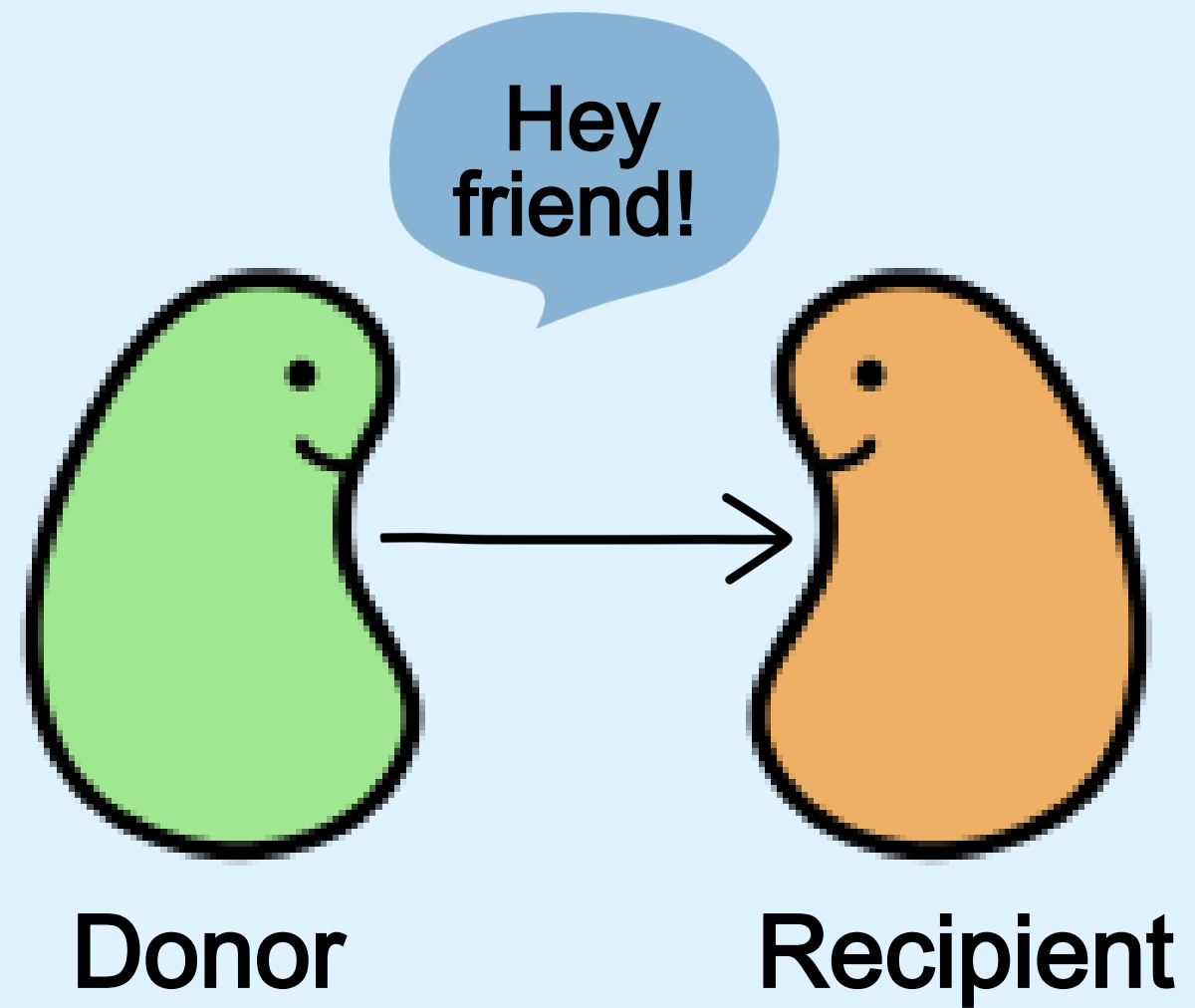


Kidney Donor Conversations

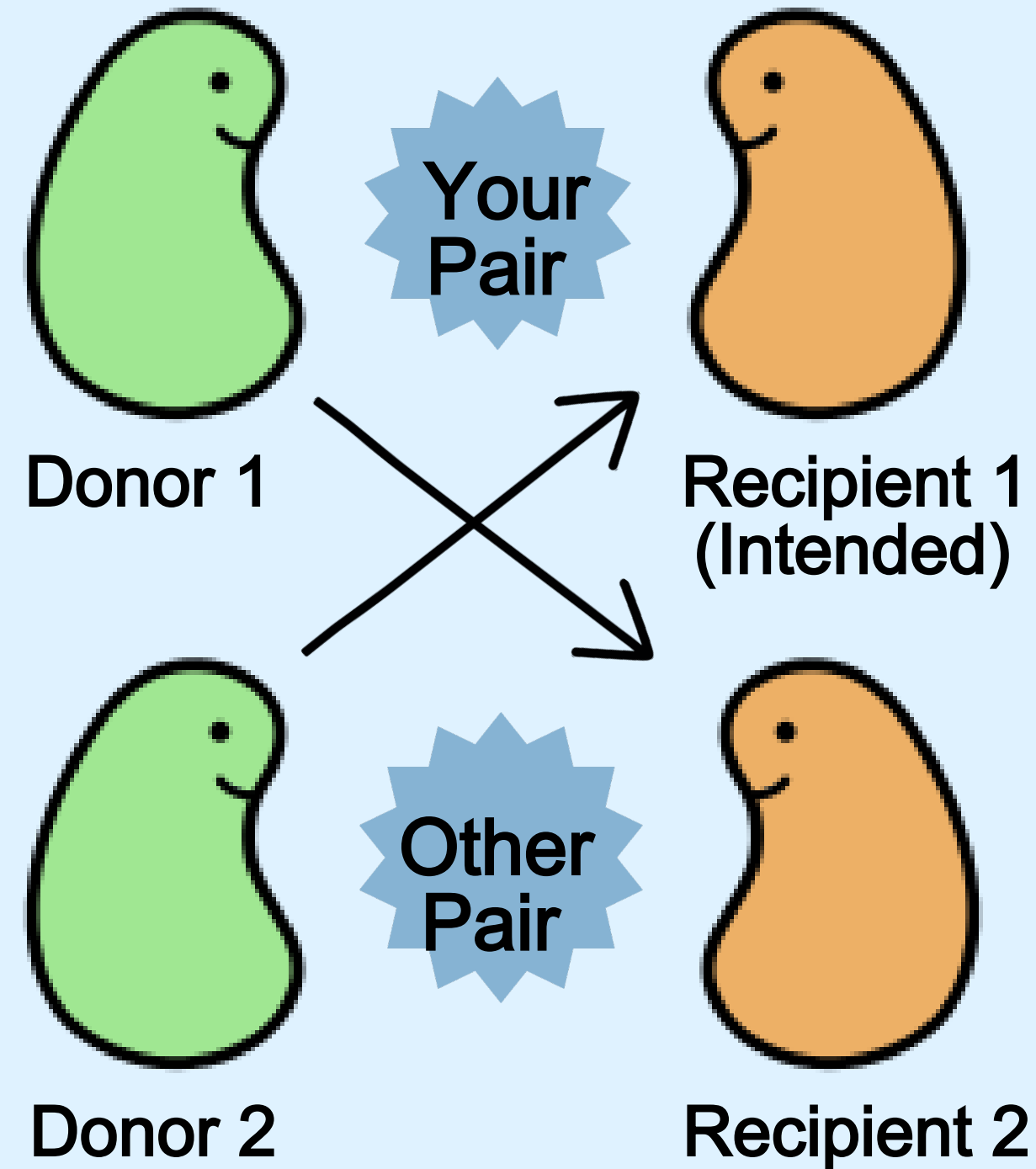
www.MyKDC.org

Ways to Donate a Kidney While Alive

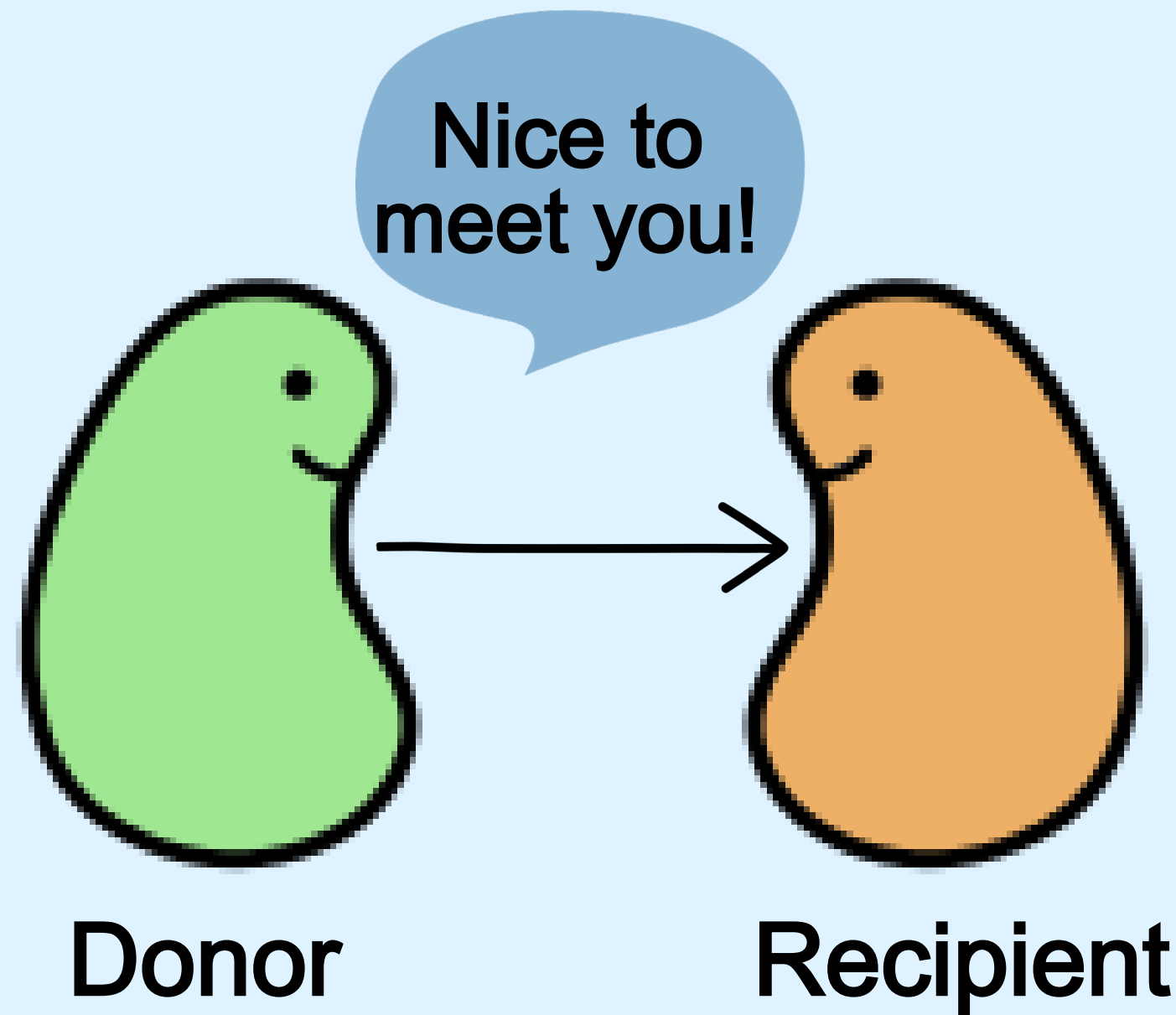
Directed Donation



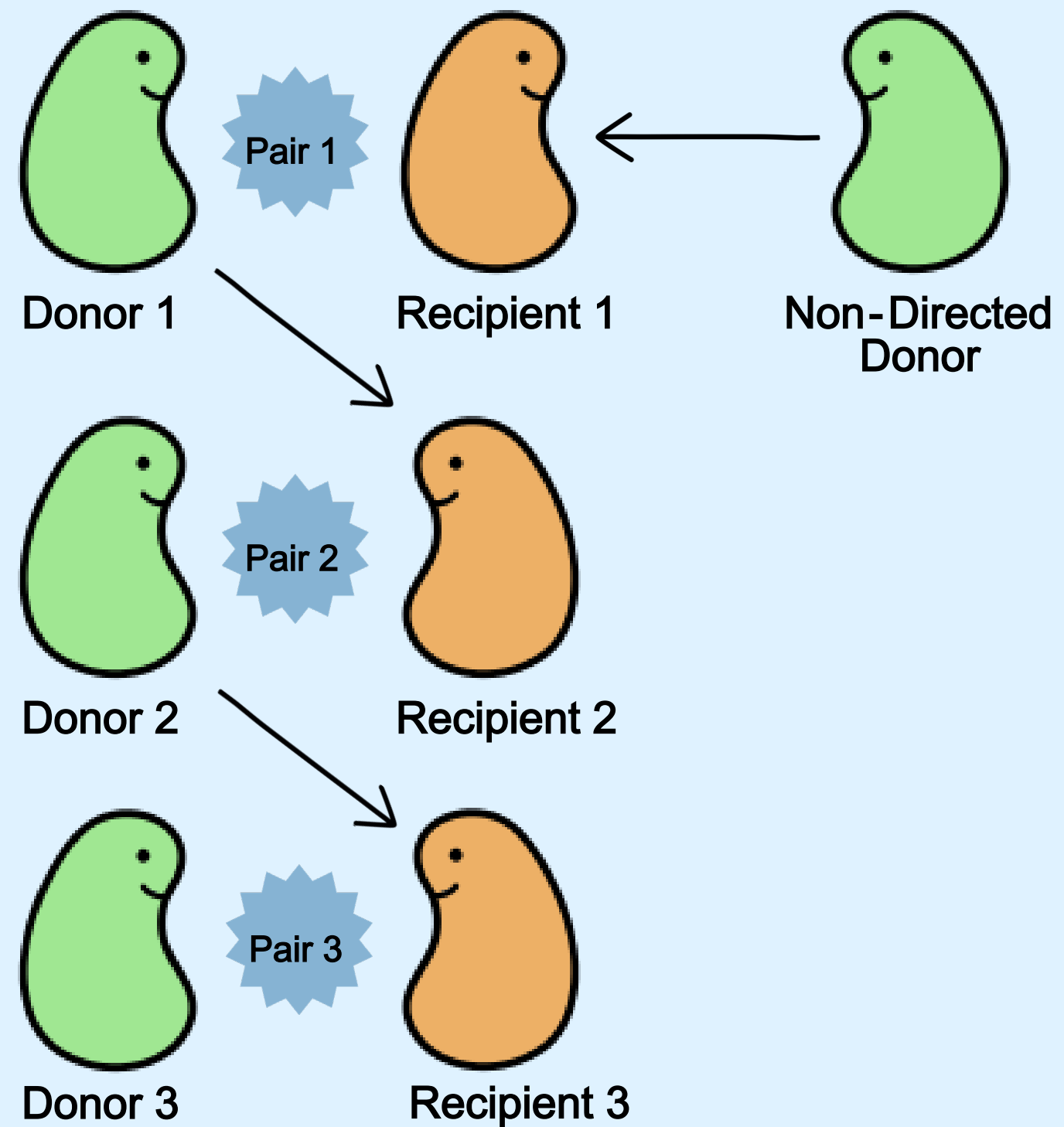
Paired Donation



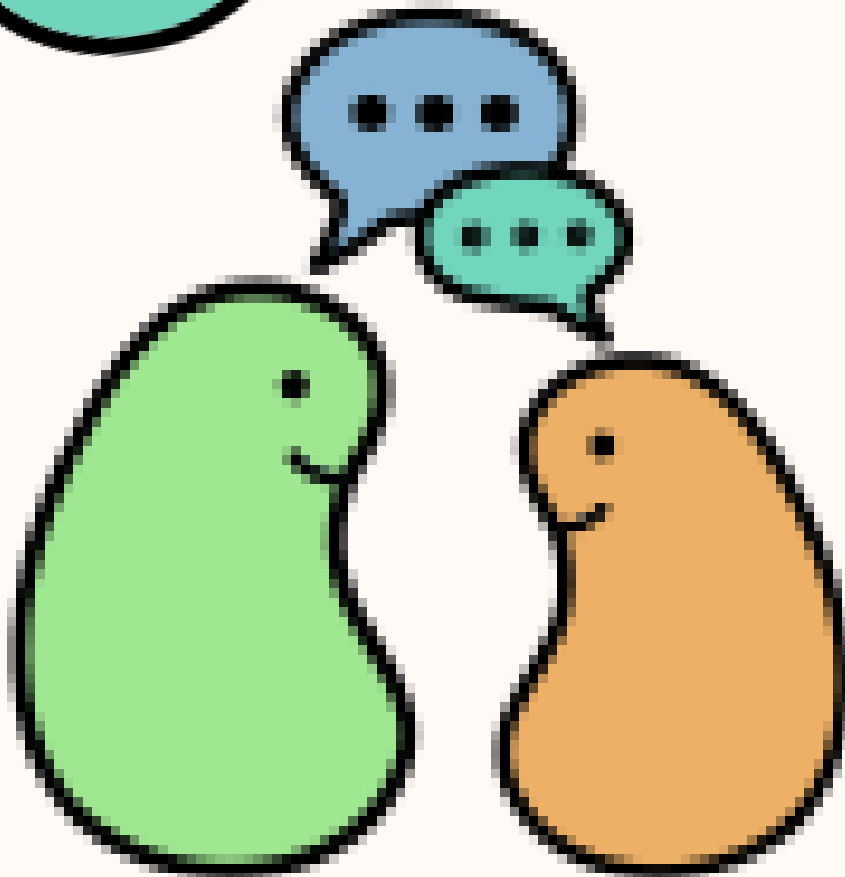
Non-Directed Donation



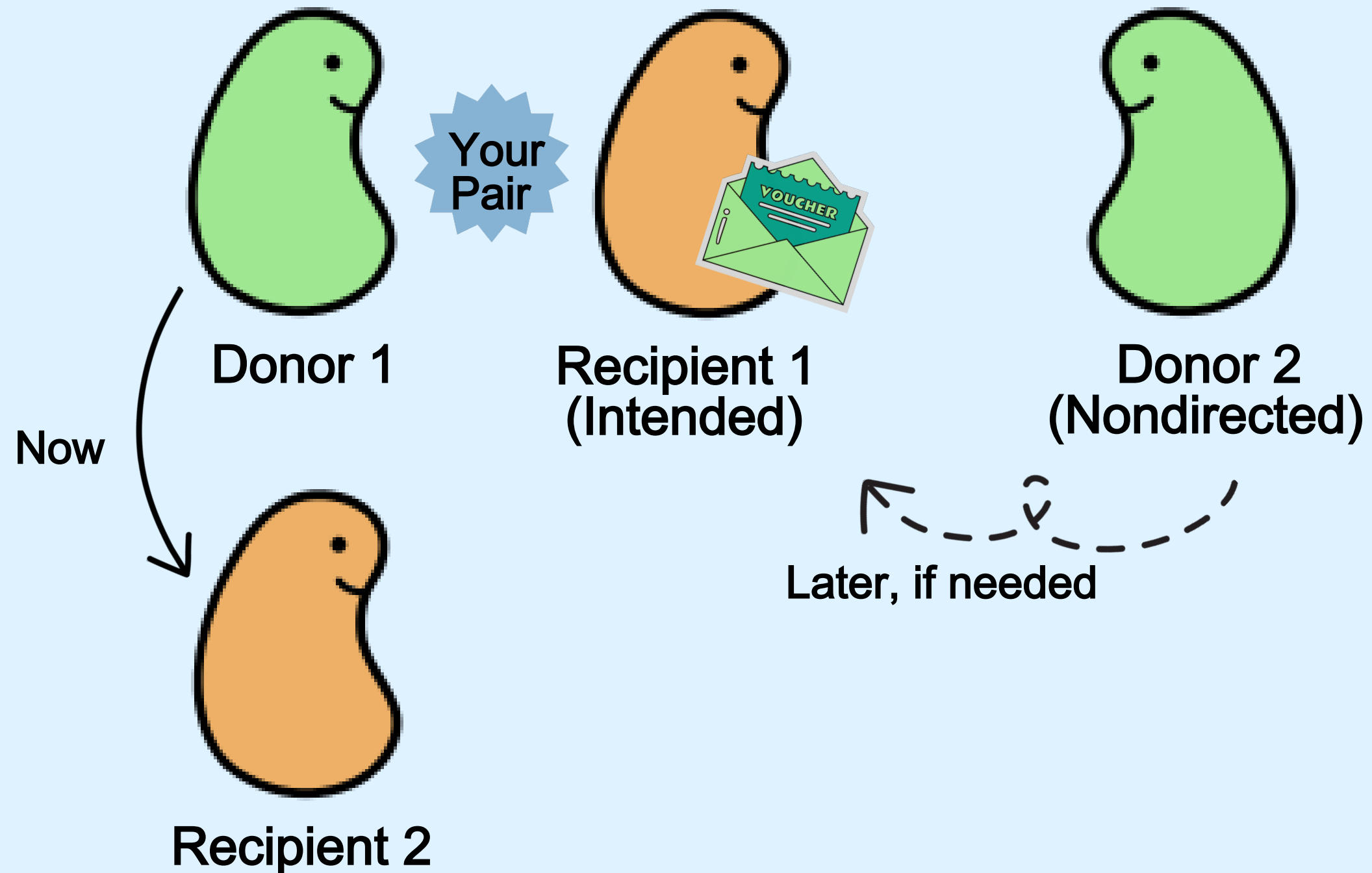
Non-Directed Chain



Polling Question
#2



Voucher Donation



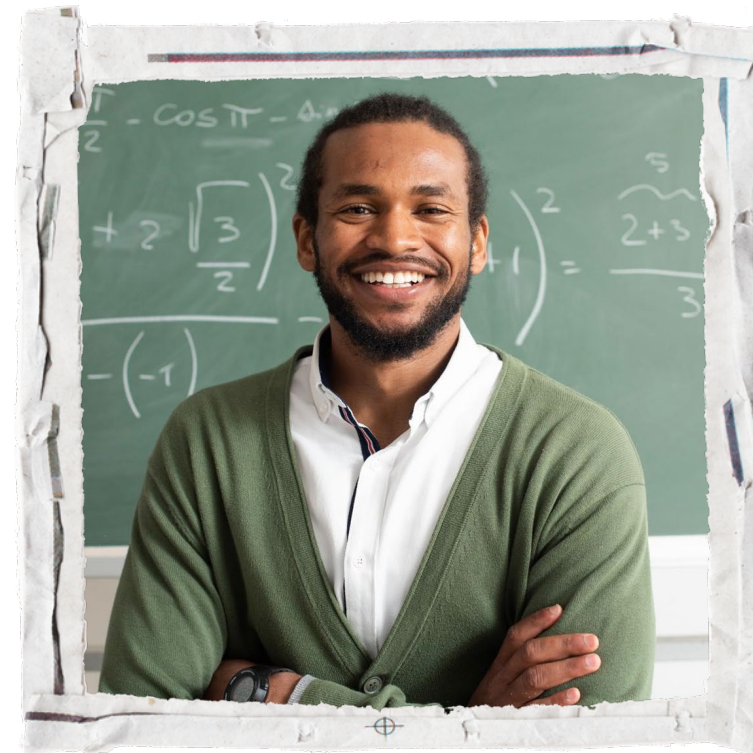


Short Term Voucher

One recipient gets a kidney within 1 -5 years.



Spouse



Teacher



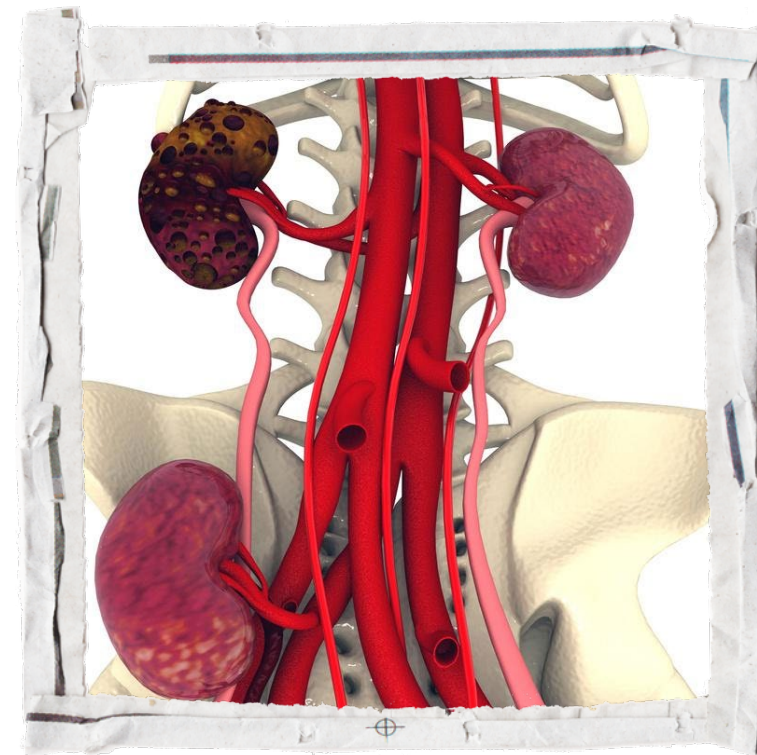


Long Term Voucher

One of the intended recipients may get a kidney if/when needed in the future.



Healthy Children



Another Transplant



Kidney Disease



Kidney Registries

No Vouchers



Kidney Paired Donation

<https://unos.org/>

Transplant Centers

Some Vouchers



NATIONAL KIDNEY REGISTRY[®]
FACILITATING LIVING DONOR TRANSPLANTS

<https://www.kidneyregistry.org>

All Vouchers



ALLIANCE
FOR PAIRED
KIDNEY
DONATION

<https://paireddonation.org/>



Short Term

Standard

- 1 Person with Kidney Disease
- Likely need a transplant within 1 year
- 2022 = 424

Long Term

Family

- Up to 5 Family Members
- "Family" = spouse, child, parent, sibling, a close friend
- Do not have to have kidney disease
- 2022 = 234

<https://mykdc.org/nkr/voucher-english>

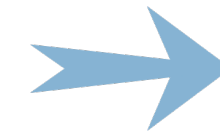
<https://mykdc.org/nkr/voucher-spanish>

How to Find NKR Voucher Centers

www.KidneyTransplantCenters.org



Sort
by:



OR



Voucher
Program

Find Center
Within



Compare the performance and services of all kidney transplant centers in the U.S.

Donors Recipients Outcomes (Adult) Outcomes (Pediatric)

click column headings for info

Rank	Center Name	State	NKR Transplants Last 12 Months	Prioritization for Deceased Kidney Donor	NKR Prioritization for Living Donor Kidney	Donor Shield Available	NKR Remote Donation	Voucher Program	NKR Member Center	Kidney for Life Participant	Donor Care Network Center
	sort	sort	sort	sort	sort	sort	sort	sort	sort	sort	sort
1	Mayo Clinic Rochester	MN	79	✓	✓	✓	✓	✓	✓	✓	✓
2	University of Minnesota Medical Center	MN	62	✓	✓	✓	✓	✓	✓	✓	✓
3	Hospital of the University of Pennsylvania	PA	52	✓	✓	✓	✓	✓	✓	✓	✓
4	UCLA Medical Center	CA	51	✓	✓	✓	✓	✓	✓	✓	✓
5	UCSF Medical Center	CA	51	✓	✓	✓	✓	✓	✗	✓	✓
6	NewYork-Presbyterian/Weill Cornell	NY	50	✓	✓	✓	✓	✓	✓	✓	✓
7	MedStar Georgetown University Hospital	DC	46	✓	✓	✓	✓	✓	✓	✓	✓

Find a center within:

100 miles (drag left or right)

Zip:

Filters:



KidneyPledge Program

Family

- Any family member (future) (grandparent, parent, child, spouse, sibling, step-child)
- Sign pledge, but don't list people
- At the time of need, person is prioritized to get kidney
- Expires at donor's death

Long Term

Friend

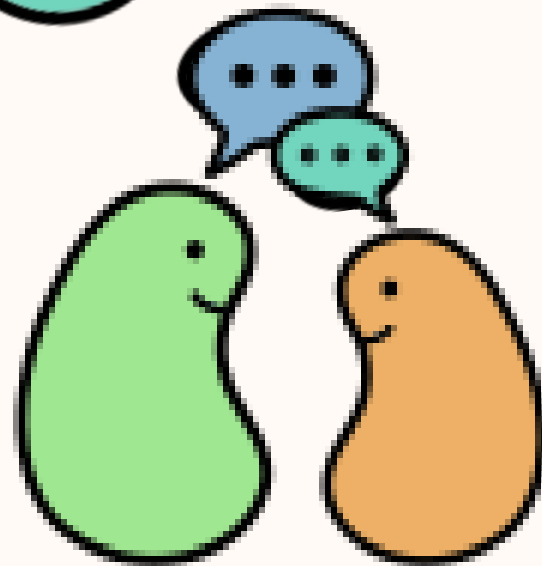
- Up to 5 people
- Do not currently have kidney disease
- At time of need, prioritize in end of chain
- Expires at death of named person

Short Term

Advance

- One person with known kidney disease
- Will need kidney in 1-5 years

Starting Conversations
about
Living Kidney Donation
with
Patients/Families

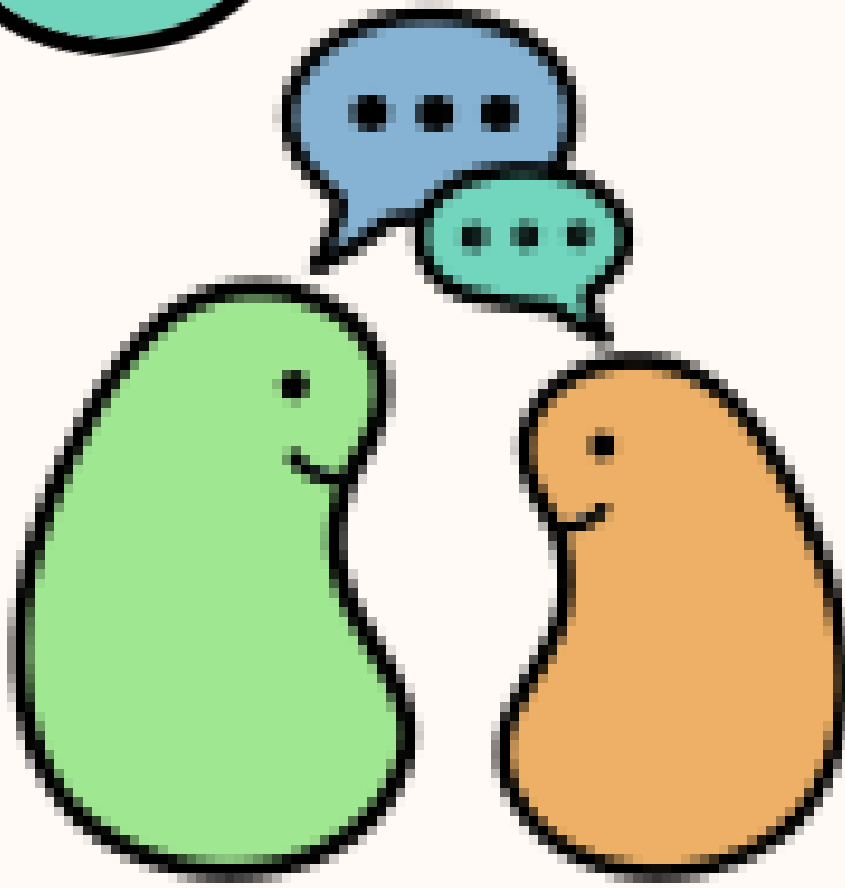


What have you been told about
living kidney donation:

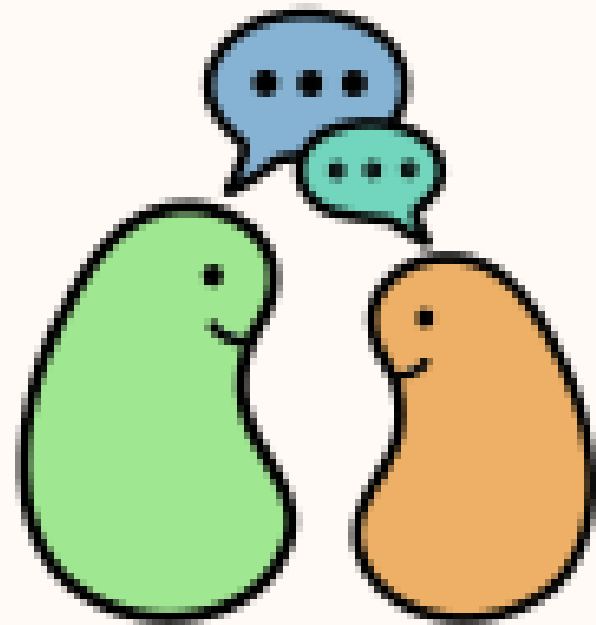
- ? Matching
- ? Paired Exchange
- ? Non-Directed Donation
- ? Voucher Donation
- ? Workup Process
- ? Surgery & Recovery



Polling Question
#3



Thank you!



Kidney Donor Conversations

www.MyKDC.org

Mission: To provide education and
support for living kidney donation

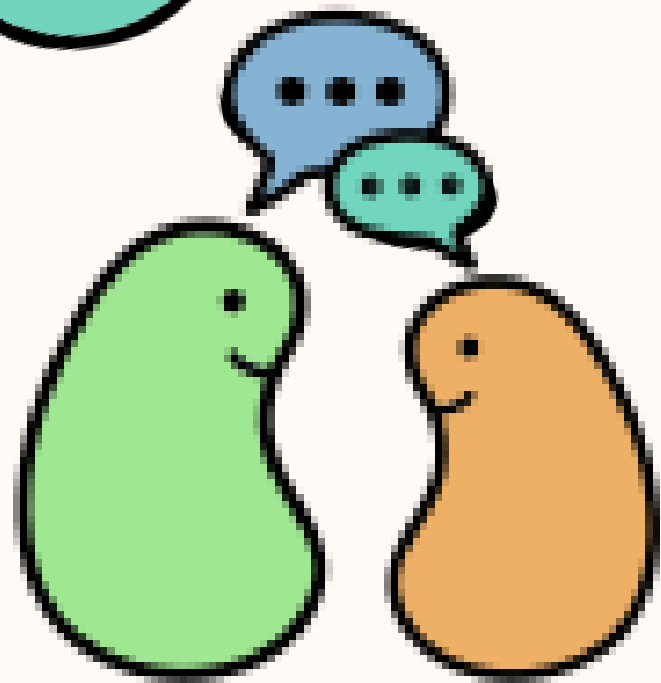
501(c)(3) nonprofit

Glenna Frey, MSN, APRN-CNS

Executive Director

Glenna@MyKDC.org

Starting Conversations
about
Living Kidney Donation
with
Patients/Families



What are Your Concerns?

Next Month ...

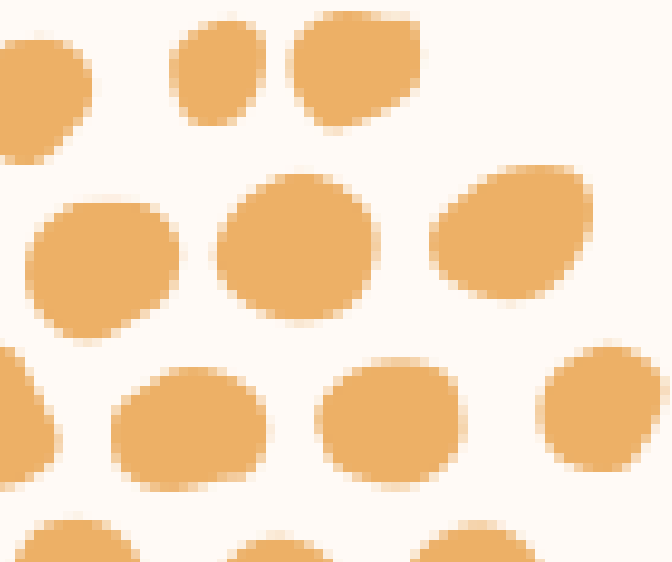


NEXT

Session 3



**Giving Life, Exploring Impact:
Benefits and Considerations
for Living Kidney Donors**



Evaluation and Post-Knowledge Check

- Link to the evaluation
 - <https://www.surveymonkey.com/r/6NX5GCZ>
 - Social Worker CEs approved from ASWB



QR Code

Activate the camera on your smart phone and scan this QR code to link to the **evaluation**

