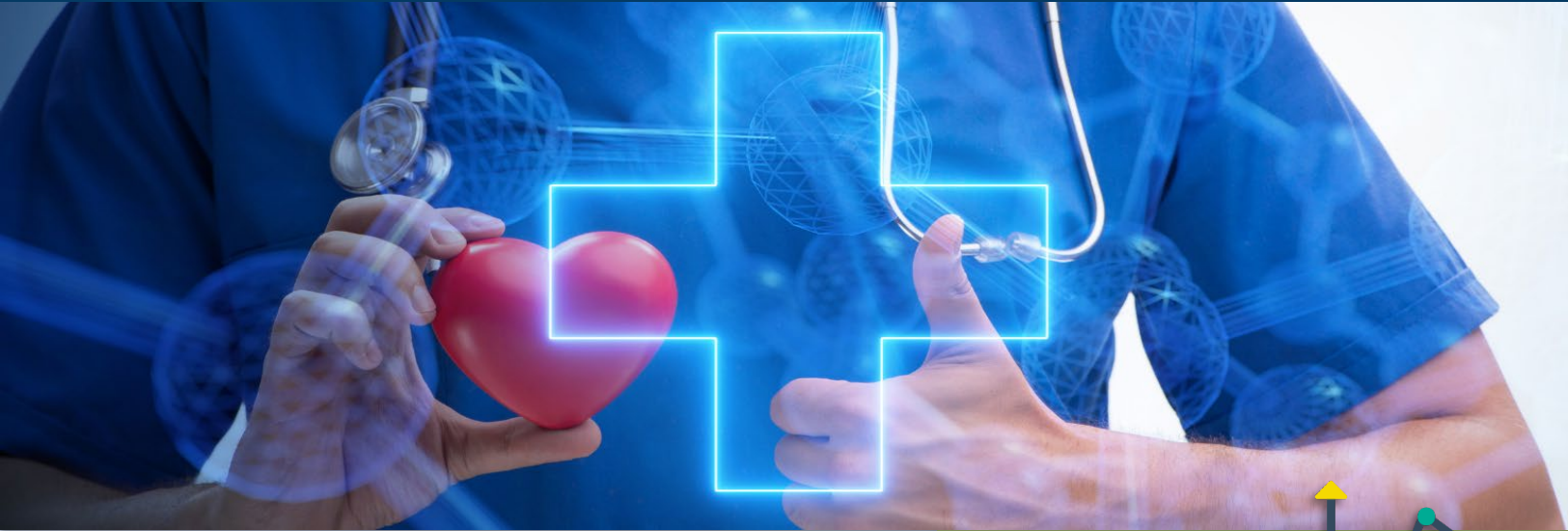


Partner with Quality Insights:

# The National Cardiovascular Health Program



Partner with Quality Insights to implement and evaluate evidence-based strategies contributing to the prevention and management of cardiovascular disease (CVD) in populations disproportionately at risk.

## Areas of Focus:

- Blood Pressure (BP) Control
- Cholesterol Management
- Social Determinants of Health
- Clinical and Social Support
- Team-Based Care



## We offer services tailored to **YOUR** populations:

- Support accurate reporting and improvement of clinical quality measures
- Optimize electronic health record (EHR) and office workflows
- Provide clinician and staff education
- Identify individual social determinants of health for populations at highest risk of CVD
- Implement team-based care
- Create and enhance community-clinical links
- Promote use of self-measured BP monitoring (SMBP) with clinical support

## The Stats in DE:



**36.2%** percentage of DE adults with a diagnosis of high BP in 2021, exceeding the national prevalence of 32.4%<sup>1</sup>

**1st** In 2021, heart disease was the leading cause of death in DE<sup>2</sup>

**7.1%** In 2021, 7.1% of DE adults reported that they were diagnosed with coronary heart disease (CHD) or they had a myocardial infarction (heart attack)<sup>3</sup>

1. America's Health Rankings, [High Blood Pressure in Delaware](#), 2023.
2. Centers for Disease Control and Prevention, [National Center for Health Statistic](#), 2023.
3. Delaware Health and Social Services, [Delaware Prevalence of Select Chronic Diseases and Conditions](#), 2022.



This publication was supported by Cooperative Agreement Number NU58DP007429 from the Centers for Disease Control and Prevention as part of the National Cardiovascular Health Program (CDC-RFA-DP-23-0004). Its contents are solely the responsibility of the authors and do not necessarily represent the official views of the Centers for Disease Control and Prevention. Publication number DEDPH-CV-122223

**Connect with Quality Insights:** Discover more benefits of partnering with Quality Insights. Contact Ashley Biscardi at 1-800-642-8686, Ext. 137 or email [abiscardi@qualityinsights.org](mailto:abiscardi@qualityinsights.org).