



Quality  
Insights

# Improve Breast and Cervical Cancer Screening Rates at NO COST to Your Practice

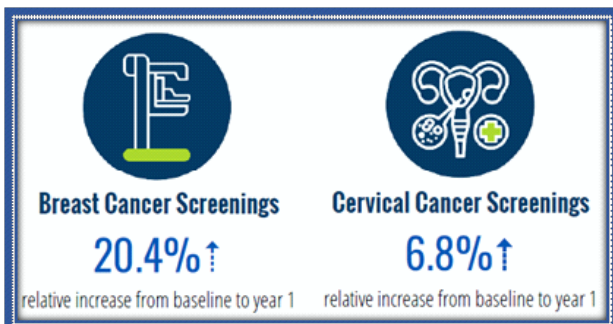
## Participating practices receive:

- ✓ On-site or Virtual Support
- ✓ Ongoing Technical Assistance
- ✓ Evidence-based Workflow Modification Assistance
- ✓ Patient Facing Resources
- ✓ Patient Reminder Campaigns
- ✓ EHR Assistance
- ✓ Proven Results

## Contact Quality Insights TODAY for Details

Your participation in this work creates a foundation for your practice's quality improvement efforts and prepares your practice for value-based payment models.

If you are interested in participating in this program or would like to learn more, please contact Sarah Toborowski at [stoborowski@qualityinsights.org](mailto:stoborowski@qualityinsights.org).



This publication was supported by the Grant Number NU58DP007101, funded by the Centers for Disease Control and Prevention. Its contents are solely the responsibility of the authors and do not necessarily represent the official views of the Centers for Disease Control and Prevention or the Department of Health and Human Services. Publication number PADOH-CS-052124

These data were provided by the Pennsylvania Department of Health.  
The department specifically disclaims responsibility for any analyses, interpretations or conclusions.

## Why is cancer screening important?

### Stats in Pennsylvania

#### Breast Cancer



1 in 7

PA women will develop breast cancer in her lifetime

10,493

Number of diagnosed female breast cancer cases in PA in 2020 (most commonly diagnosed cancer)

#2

Breast cancer was the second leading cause of cancer death in women.

73.6%

Number of breast cancers in PA women were diagnosed at an early stage in 2020

#### Cervical Cancer



1 in 169

PA women will develop cervical cancer in her lifetime

442

Number of diagnosed cervical cancer cases in PA in 2020

44.3%

Less than half of cervical cancers were diagnosed at an early stage